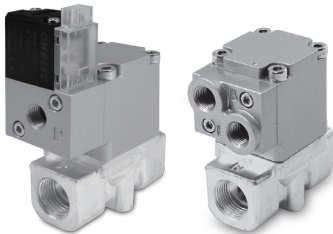


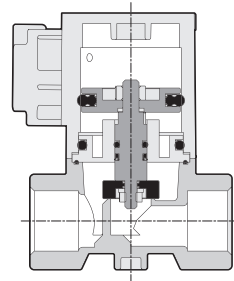
# SUB series 2/2 Cylinder Valve

Product features/ Code of order

CHELIC



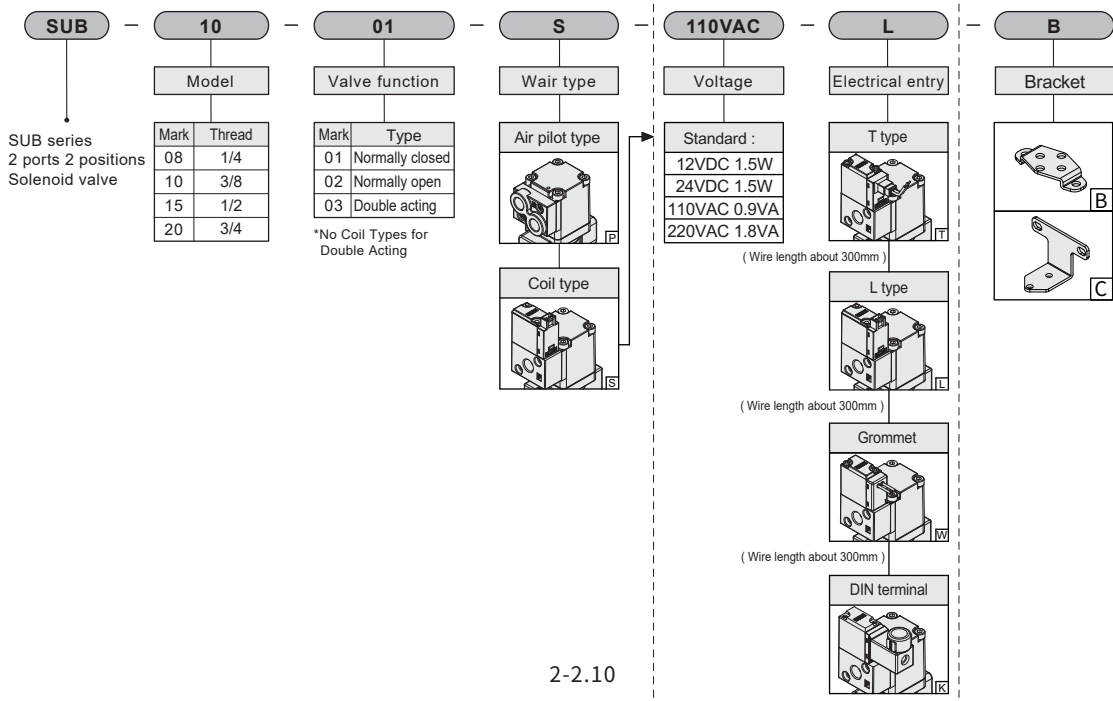
## Internal structure



## Specification

Item	Model	SUB			
		8	10	15	20
Pressure range	kgf/cm <sup>2</sup> (kPa)	0-9 (0~900)		0~10 (0~1000)	
Fluid		Air			
Ambient and fluid temperature	°C	5 ~ 60			
Pilot type		Air operated			
Air Guidance Pressure Range	kgf/cm <sup>2</sup>	(Normally closed) 3.5 ~ 7, (Normally open & Double acting) *See instruction manual - Chart (1)			
Number of position ports		2/2 Solenoid valve			
Valve leakage	Cm <sup>3</sup> /min	0.12 Below			
Type of actuation		Normally closed	Normally open	Double acting	
Valve Port Size	mm <sup>2</sup>	10	10	15	16
Port size	(Rc/G/NPT)	1/4	3/8	1/2	3/4
Material	Body	Brass forging		Brass casting	
	Diaphragm	NBR			
	Spring	Piano wire			
Weight	kg	0.31	0.24	0.57	16

## Code of order



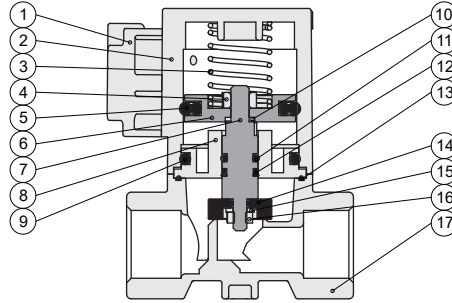
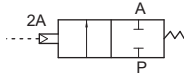
# SUB series 2/2 Cylinder Valve

## Product features

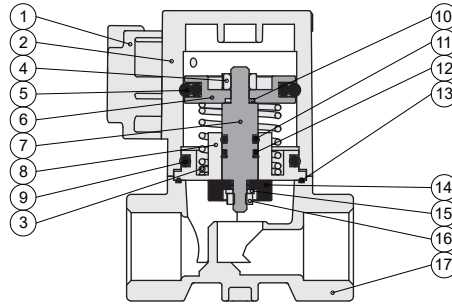
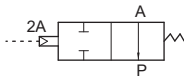
CHELIC

### Internal structure

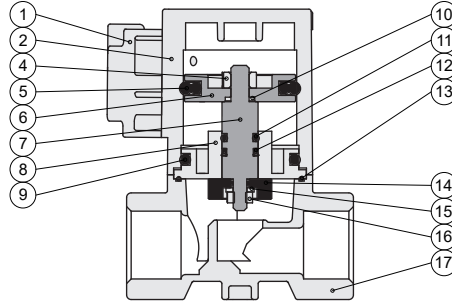
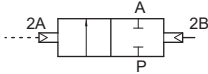
#### ● NC: 2/2 Solenoid valve



#### ● NO: 2/2 Solenoid valve



#### ● Double acting: 2/2 Solenoid valve



### Components and material list

NO.	Item	Material	NO.	Item	Material
01	Port cap/ Coil cap	Aluminum alloy	09	O-ring	NBR
02	Body	Aluminum alloy	10	O-ring	NBR
03	NC Spring, NO Spring	Piano wire	11	O-ring	NBR
04	Nut	Stainless steel	12	Entrance packing	NBR
05	PSD Packing	NBR	13	O-ring	NBR
06	Piston	Aluminum alloy	14	Valve rubber	NBR
07	Rod	Brass	16	Nut spring washer	Stainless steel
08	Bulkhead	Brass	17	Body (Bottom)	Brass

SBS

SU

SFW

SUB

SUG

SUD2

SUW2

SUS

SAS

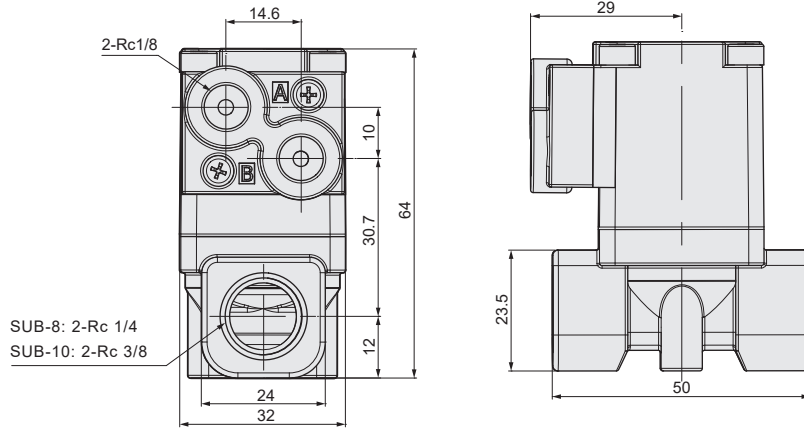
SDC

# SUB series 2/2 Cylinder Valve

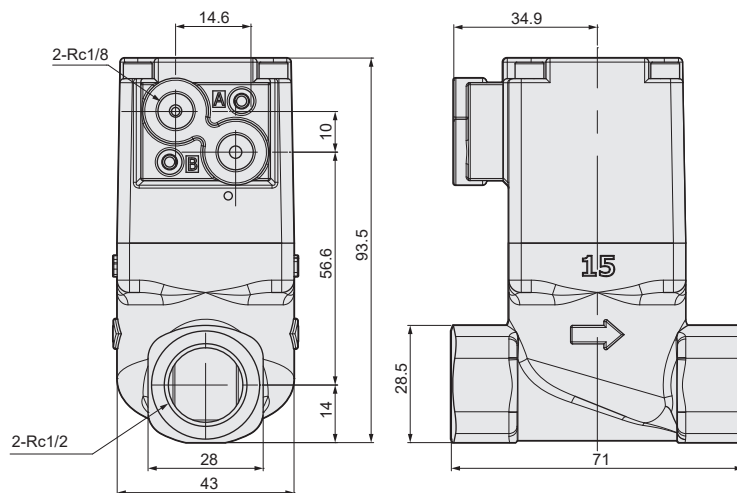
Dimensions/ Fitting type

CHELIC

## ◉ SUB 8 & 10 - P



## ◉ SUB 15 - P

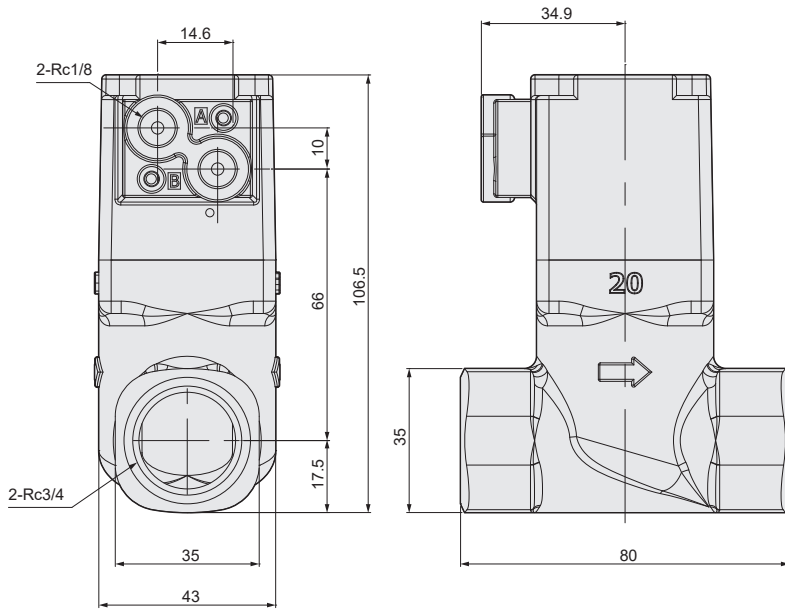


# SUB series 2/2 Cylinder Valve

Dimensions/ Standard

CHELIC

○ SUB 20 - P



SBS

SU

SFW

**SUB**

SUG

SUD2

SUW2

SUS

SAS

SDC

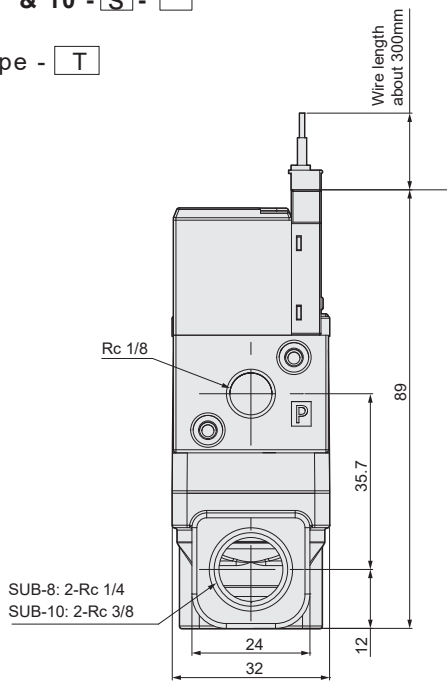
# SUB series 2/2 Cylinder Valve

## Dimensions/ Coils type

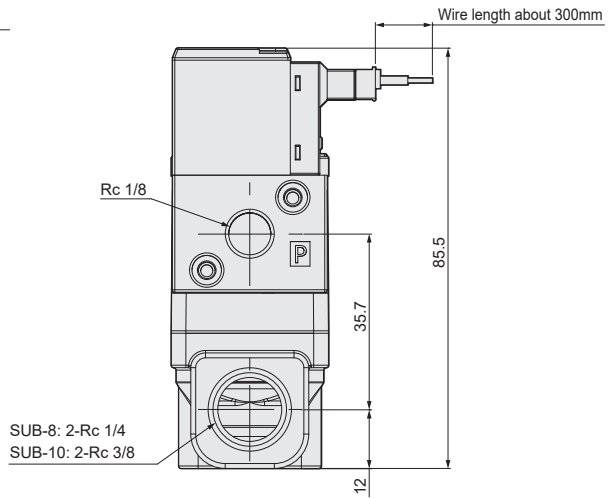
**CHELIC**

● SUB 8 & 10 - [S] - □

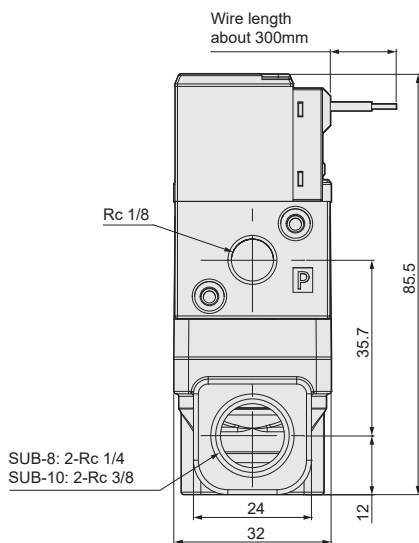
● T type - [T]



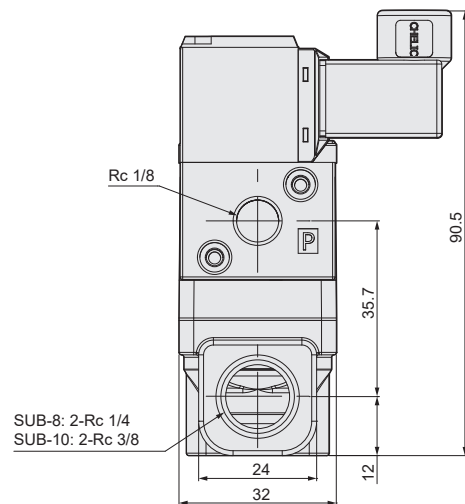
● L type - [L]



● Grommet - [W]



● DIN terminal - [K]



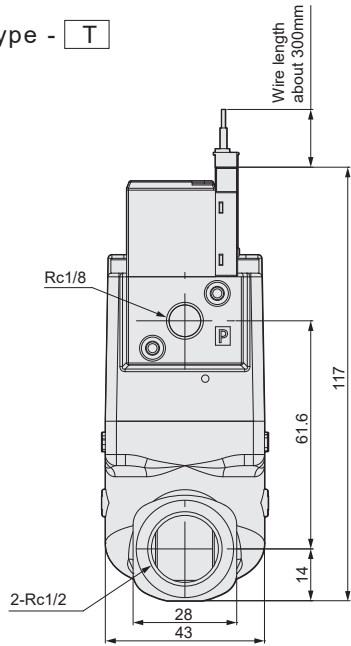
# SUB series 2/2 Cylinder Valve

Dimensions/ Coils type

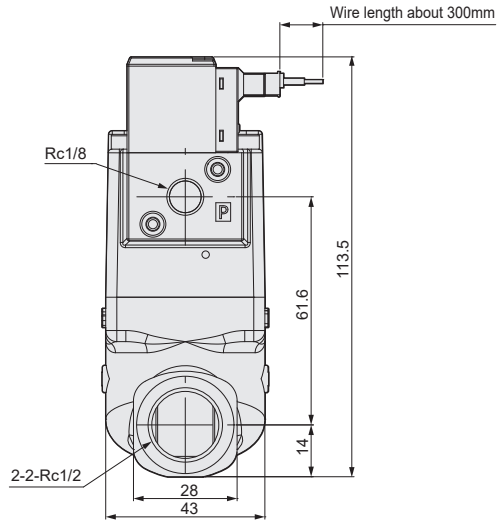
**CHELIC**

● SUB 15 -  S -

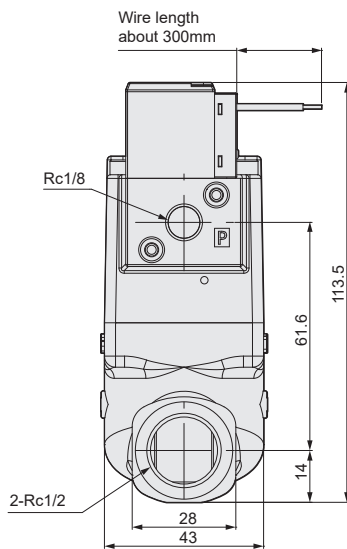
● T type -  T



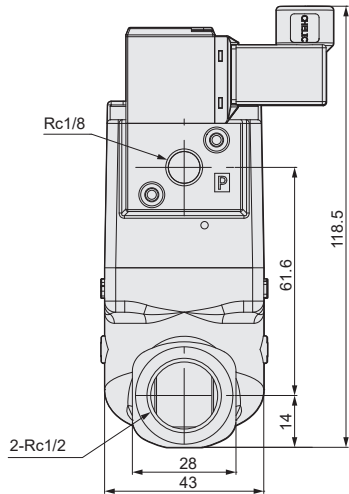
● L type -  L



● Grommet -  W



● DIN terminal -  K



SBS

SU

SFW

SUB

SUG

SUD2

SUW2

SUS

SAS

SDC

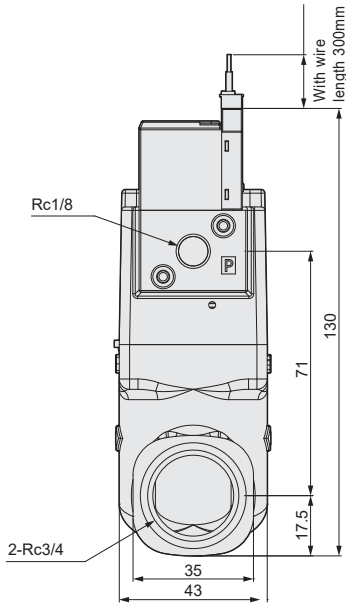
# SUB series 2/2 Cylinder Valve

Dimensions/ Coils type

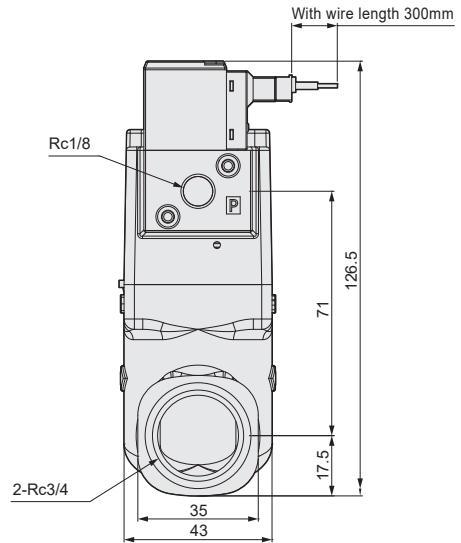
CHELIC

● SUB 20 -  S -

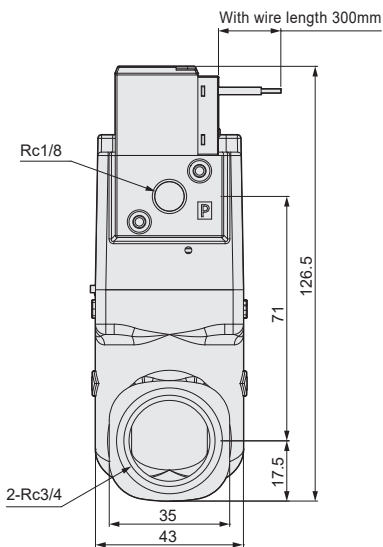
● T type -  T



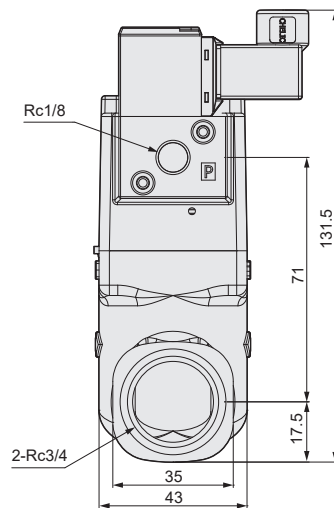
● L type -  L



● Grommet -  W



● DIN terminal -  K



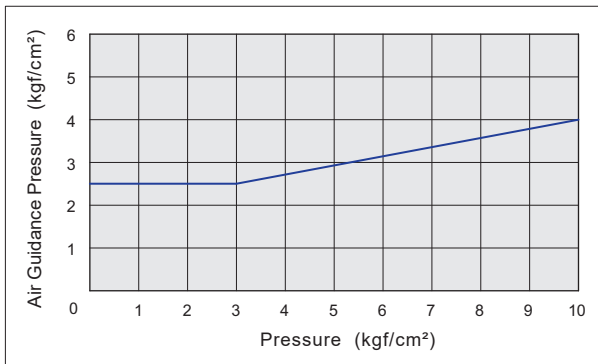
# SUB series 2/2 Cylinder Valve

## Air Guidance Pressure Range

CHELIC

### ▣ Air Guidance Pressure Range (Normal open & Double Acting)

#### ● Chart (1)



SBS

SU

SFW

**SUB**

SUG

SUD2

SUW2

SUS

SAS

SDC