

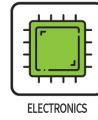
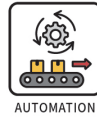
Vacuum pad

PLA/PRD

PT/PFS

CHELIC®

Applicable



Varieties of pad sizes, styles and material.

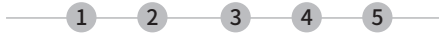
Photos				
Series	PLA Series	PRD Series	PT Series	PFS Series
Styles	Long thin plate pad	Long cylindrical pad	Anti-Skew pad	Sponge pad
Usage	<p>Handling long materials: The single piston structure ensures high load resistance that to reduce friction situation.</p>	<p>Designed for cylindrical object adsorption, Batteries, electronic components, and metal tubes.</p>	<p>Anti-Skew Handling: A stable handling during high-speed.</p> <p>It may skewing during handling</p> <p>PT Series Adsorption</p>	<p>Materials with rough surfaces: Available to embossed steel plates and welded electronic components PCBs.</p>
Bracket	F: Vertical piping K: Vertical piping with joint T: Lateral piping FS: Vertical spring type TS: Lateral spring type			
Pad diameters	Ø23xØ60、Ø30xØ90 Ø40xØ80、Ø16xØ50	Ø9.5xØ25、Ø15xØ30 Ø25xØ70	Ø30、Ø40、Ø50	Ø10、Ø15、Ø20 Ø30、Ø40、Ø50
Material	N: NBR (rubber) SE: Antistatic rubber	PU: Polyurethane E: Low-impedance antistatic rubber	S: Silicone, silicone rubber	EPDM Antistatic, EPDM Non-antistatic
Characteristics	<ol style="list-style-type: none"> Ensures strong sealing and adhesion for secure handling Smooth flow channel for quick absorption 	<ol style="list-style-type: none"> Available in various sizes and materials. Effective for handling oily surface workpieces. 	<ol style="list-style-type: none"> Available in various sizes and materials Utilizes concave and convex adsorption surfaces for improved detachability Reinforced top ribs prevent adsorption and distortion Features a 1.5 corrugated design for a large compression stroke. 	<ol style="list-style-type: none"> Available to workpieces of different sizes and shapes Offers various sizes and bracket options Available to a rough and uneven surfaces without changing suction performance
Qrcode				

PT series Anti-Skew Pad

Code of order, Vacuum pad size

CHELIC

Code of order **PT F - 30 x** **- N -**



1	Bracket	Vertical entry	Vertical entry with fitting	Side entry	Vertical entry with spring	Side entry with spring
	Mark	F	K	T	FS	TS
	Image					

2	Mark	Outer dia. (mm)
	30	30
	40	40
	50	50

3	Mark	Stroke (mm)
	6	6
	15	15

● Only available to FS, TS series

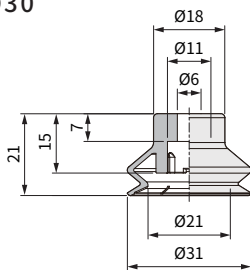
4	Mark	Vacuum pad material	Hardness (HS)	Ambient and fluid temperature	Color	Electrical resistance ^(Note)
	N	NBR(Rubber)	A60/S	-40~100°C	Black	—
	S	Silicon, Silicone rubber	A60/S	-50~180°C	Black	—
	SE	Anti-static rubber	A50/S	-50~180°C	Black	10 ⁴ ~10 ⁶ Ω·cm
	E	Low resistance & anti-static rubber	A70/S	-50~180°C	Black	200Ω·cm

● The above value covers only general characteristics of subject rubber materials. Pad materials used by CHELIC pass internal standard.

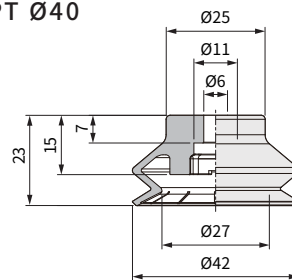
5	Mark	Ball joint type	
	None	Without ball joint type	
	R	With ball joint type	

Vacuum pad size

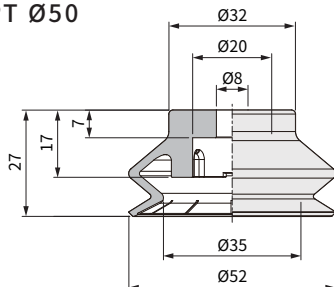
● PT Ø30



● PT Ø40



● PT Ø50



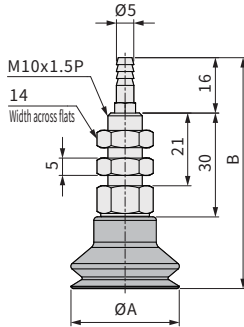
PT series Anti-Skew Pad

Dimensions/ PTF, PTK, PTT, PTTS series

CHELIC

PTF series/ Vertical entry

▶ PTF-30~PTF-50

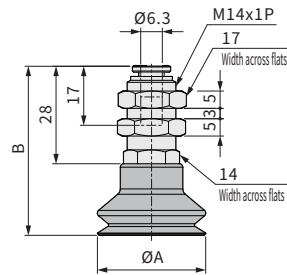


Unit: mm

Model	Pad dia. A	Whole length B	Size of PU tube
PTF-30	Ø31	67	PU tube 6x4
PTF-40	Ø42	69	
PTF-50	Ø52	73	

PTK series/ Vertical entry with fitting

▶ PTK-30~PTK-50

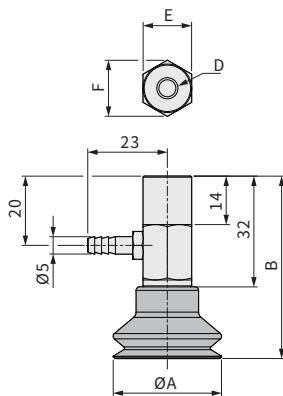


Unit: mm

Model	Pad dia. A	Whole length B	Size of PU tube
PTK-30	Ø31	49	PU tube 6x4
PTK-40	Ø42	51	
PTK-50	Ø52	55	

PTT series / Side entry

▶ PTT-30~PTT-50

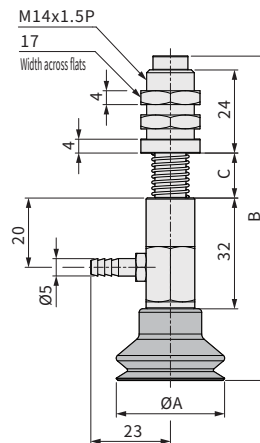


Unit: mm

Model	Pad dia. A	Whole length B	D	E	F	Size of PU tube
PTT-30	Ø31	53	M6x1 深 8	14	16.5	PU tube 6x4
PTT-40	Ø42	55				
PTT-50	Ø52	59				

PTTS series/ Side entry with spring

▶ PTTS-30~PTTS-50



Unit: mm

Model	Pad dia. A	Stroke 6		Stroke 15		Size of PU tube	Spring compression length
		B	C	B	C		
PTTS-30	Ø31	101	13	118	30	PU tube 6x4	6, 15
PTTS-40	Ø42	103	13	120	30		
PTTS-50	Ø52	107	13	124	30		

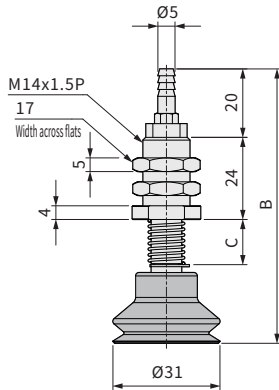
PT series Anti-Skew Pad

Dimensions/ PTFS, PTF-R, PTK-R series

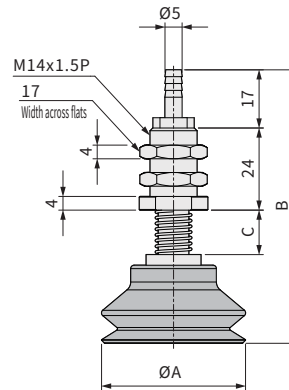
CHELIC

PTFS series/ Vertical entry with spring

PTFS-30



PTFS-40, PTFS-50



Unit: mm

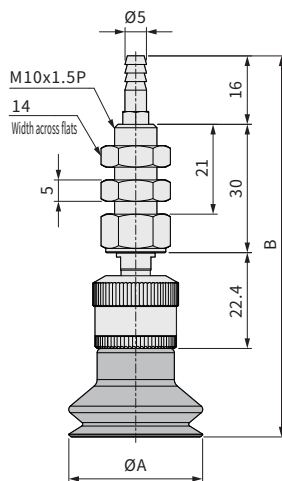
Unit: mm

Model	Pad dia. A	Stroke 6		Stroke 15		Size of PU tube	Spring compression length
		B	C	B	C		
PTFS-30	Ø31	81	13	98	30	PU tube 6x4	6, 15

Model	Pad dia. A	Stroke 6		Stroke 15		Size of PU tube	Spring compression length
		B	C	B	C		
PTFS-40	Ø42	83	13	100	30	PU tube 6x4	6, 15
PTFS-50	Ø52	87	13	104	30		

PTF-R series/ Vertical entry - Ball joint type

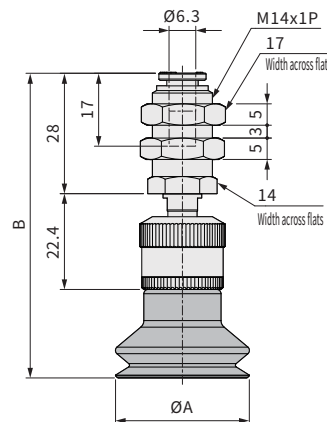
PTF-30-R ~ PTF-50-R



PTK-R series

Vertical entry with fitting - Ball joint type

PTK-30-R ~ PTK-50-R



Unit: mm

Unit: mm

Model	Pad dia. A	Whole length B	Size of PU tube
PTF-30-R	Ø31	89.4	PU tube 6x4
PTF-40-R	Ø42	91.4	
PTF-50-R	Ø52	95.4	

Model	Pad dia. A	Whole length B	Size of PU tube
PTK-30-R	Ø31	71.4	PU tube 6x4
PTK-40-R	Ø42	73.4	
PTK-50-R	Ø52	77.4	

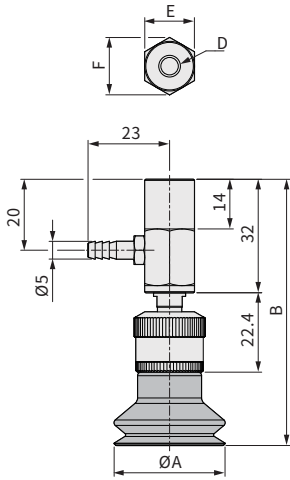
PT series Anti-Skew Pad

Dimensions/ PTT-R, PTTS-R, PTFS-R series

CHELIC

PTT-R series/ Side entry- Ball joint type

PTT-30-R ~ PTT-50-R



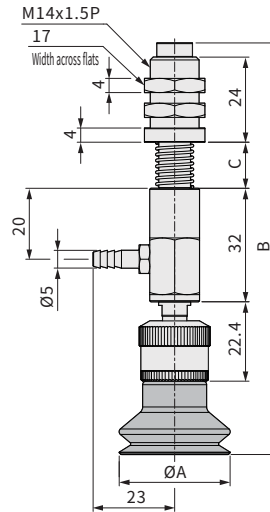
Unit: mm

Model	Pad dia. A	Whole length B	D	E	F	Size of PU tube
PTT-30-R	Ø31	75.4	M6x1 dp 8	14	16.5	PU tube 6x4
PTT-40-R	Ø42	77.4				
PTT-50-R	Ø52	81.4				

PTTS-R series

Side entry with spring- Ball joint type

PTTS-30-R ~ PTTS-50-R



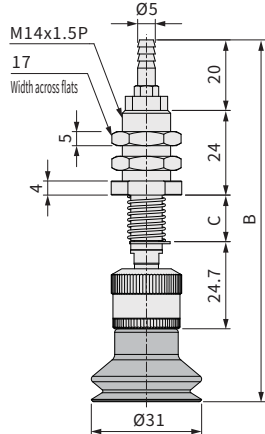
Unit: mm

Model	Pad dia. A	Stroke 6		Stroke 15		Size of PU tube	Spring compression length
		B	C	B	C		
PTTS-30-R	Ø31	123.4	13	140.4	30	PU tube 6x4	6, 15
PTTS-40-R	Ø42	125.4	13	142.4	30		
PTTS-50-R	Ø52	129.4	13	146.4	30		

PTFS-R series

Vertical entry with spring - Ball joint type

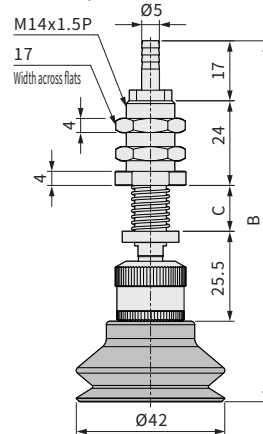
PTFS-30-R



Unit: mm

Model	Pad dia. A	Stroke 6		Stroke 15		Size of PU tube	Spring compression length
		B	C	B	C		
PTFS-30-R	Ø31	103.4	13	120.4	30	PU tube 6x4	6, 15

PTFS-40-R, PTFS-50-R



Unit: mm

Model	Pad dia. A	Stroke 6		Stroke 15		Size of PU tube	Spring compression length
		B	C	B	C		
PTFS-40-R	Ø42	105.4	13	122.4	30	PU tube 6x4	6, 15
PTFS-50-R	Ø52	109.4	13	126.4	30		