

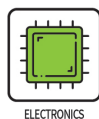
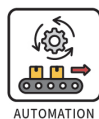
Vacuum pad

PLA/PRD

PT/PFS

CHELIC®

Applicable



Varieties of pad sizes, styles and material.

Photos				
Series	PLA Series	PRD Series	PT Series	PFS Series
Styles	Long thin plate pad	Long cylindrical pad	Anti-Skew pad	Sponge pad
Usage	<p>Handling long materials: The single piston structure ensures high load resistance that to reduce friction situation.</p>	<p>Designed for cylindrical object adsorption, Batteries, electronic components, and metal tubes.</p>	<p>Anti-Skew Handling: A stable handling during high-speed.</p> <p>It may skewing during handling</p> <p>PT Series Adsorption</p>	<p>Materials with rough surfaces: Available to embossed steel plates and welded electronic components PCBs.</p>
Bracket	F: Vertical piping K: Vertical piping with joint T: Lateral piping FS: Vertical spring type TS: Lateral spring type			
Pad diameters	Ø23xØ60、Ø30xØ90 Ø40xØ80、Ø16xØ50	Ø9.5xØ25、Ø15xØ30 Ø25xØ70	Ø30、Ø40、Ø50	Ø10、Ø15、Ø20 Ø30、Ø40、Ø50
Material	N: NBR (rubber) SE: Antistatic rubber	PU: Polyurethane E: Low-impedance antistatic rubber	S: Silicone, silicone rubber	EPDM Antistatic, EPDM Non-antistatic
Characteristics	<ol style="list-style-type: none"> Ensures strong sealing and adhesion for secure handling Smooth flow channel for quick absorption 	<ol style="list-style-type: none"> Available in various sizes and materials. Effective for handling oily surface workpieces. 	<ol style="list-style-type: none"> Available in various sizes and materials Utilizes concave and convex adsorption surfaces for improved detachability Reinforced top ribs prevent adsorption and distortion Features a 1.5 corrugated design for a large compression stroke. 	<ol style="list-style-type: none"> Available to workpieces of different sizes and shapes Offers various sizes and bracket options Available to a rough and uneven surfaces without changing suction performance
Qrcode				

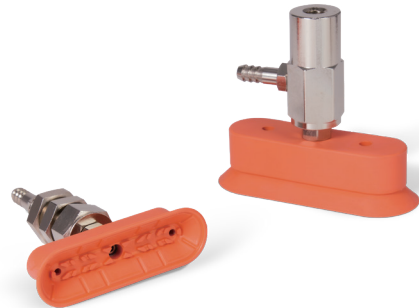
PLA series Long Thin Plate Pad

Product features

CHELIC

Feature

- Ensures strong sealing and adhesion for secure handling.
- Multiple bracket options to meet the needs of different workplaces.
- Smooth flow channel for quick absorption.



Vacuum pad material

Mark	Vacuum pad material	Hardness (HS)	Ambient and fluid temperature	Color	Electrical resistance(Note)
N	NBR(Rubber)	A60/S	-40~100°C	Orange	—
S	Silicon, Silicone rubber	A60/S	-50~180°C	Black	—
SE	Anti-static rubber	A50/S	-50~180°C	Black	10 ⁴ ~10 ⁶ Ω·cm
E	Low resistance & anti-static rubber	A70/S	-50~180°C	Black	200Ω·cm

Note: The above value covers only general characteristics of subject rubber materials. Pad materials used by CHELIC pass internal standard.

Vacuum control system

Theoretical suction is calculated from pad size and vacuum value, which is only a number for reference. Theoretical suction is a number under static status. Please reserve enough margin while adding workpieces and movement.

Before confirm the Qty and location of suction pad, please reserve enough margin.

● Suction type



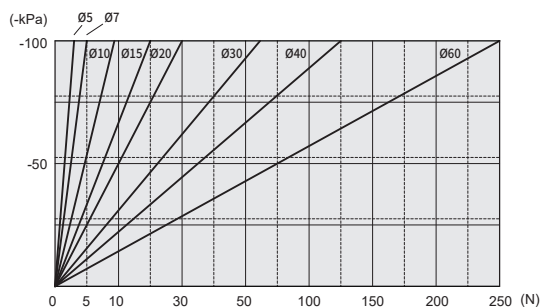
● Calculation formula

$$W = \frac{P \times A}{-10}$$

W : Force N
 P : Vacuum pressure kPa
 A : Pad area dimensions cm²

Theoretical suction

- Pad diameter : Ø5~Ø60



PLA series Long Thin Plate Pad

Code of order, Vacuum pad size

CHELIC

Code of order **PLA F - 16 x** **- N -**



1	Bracket	Vertical entry	Vertical entry with fitting	Side entry	Vertical entry with spring	Side entry with spring
Mark	F	K	T	FS	TS	
Image						

2	Mark	Pad size(L x W, mm)
	16	16x50
	23	23x60
	30	30x90
	40	40x80

3	Mark	Stroke (mm)
	6	6
	15	15

● Only available to FS, TS series

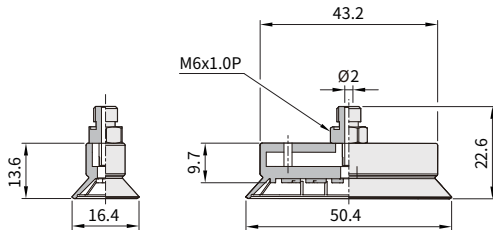
4	Mark	Vacuum pad material	Hardness (HS)	Ambient and fluid temperature	Color	Electrical resistance(Note)
	N	NBR(Rubber)	A60/S	-40~100°C	Orange	—
	S	Silicon, Silicone rubber	A60/S	-50~180°C	Black	—
	SE	Anti-static rubber	A50/S	-50~180°C	Black	10 ⁴ ~10 ⁶ Ω·cm
	E	Low resistance & anti-static rubber	A70/S	-50~180°C	Black	200Ω·cm

● The above value covers only general characteristics of subject rubber materials. Pad materials used by CHELIC pass internal standard.

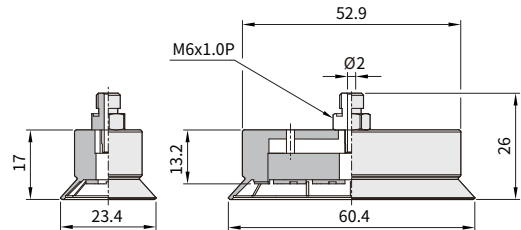
5	Mark	Ball joint type	
	None	Without ball joint type	
	R	With ball joint type	

Vacuum pad size

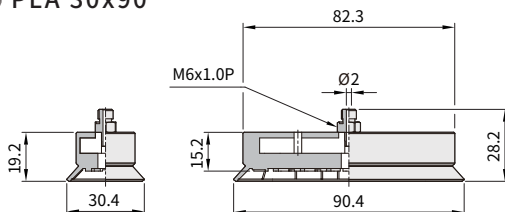
● PLA 16x50



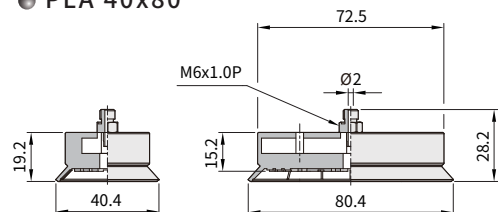
● PLA 23x60



● PLA 30x90



● PLA 40x80



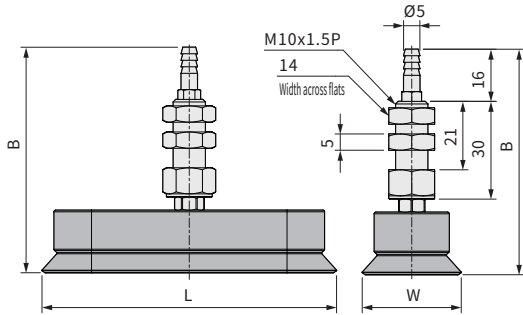
PLA series Long Thin Plate Pad

Dimensions/ PLAF, PLAK, PLAFS, PLAT series

CHELIC

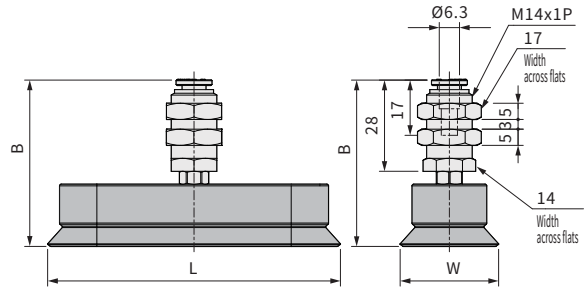
PLAF series/ Vertical entry

► 16x50, 23x60, 30x90, 40x80



PLAK series/ Vertical entry with fitting

► 16x50, 23x60, 30x90, 40x80



Unit: mm

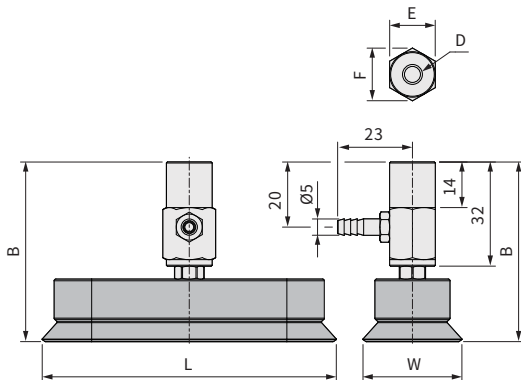
Model	W	L	Whole length B	Size of PU tube
PLAF-16x50	16.4	50.4	63.6	PU tube 6x4
PLAF-23x60	23.4	60.4	67	
PLAF-30x90	30.4	90.4	69.2	
PLAF-40x80	40.4	80.4	69.2	

Unit: mm

Model	W	L	Whole length B	Size of PU tube
PLAK-16x50	16.4	50.4	45.6	PU tube 6x4
PLAK-23x60	23.4	60.4	49	
PLAK-30x90	30.4	90.4	51.2	
PLAK-40x80	40.4	80.4	51.2	

PLAT series / Side entry

► 16x50, 23x60, 30x90, 40x80

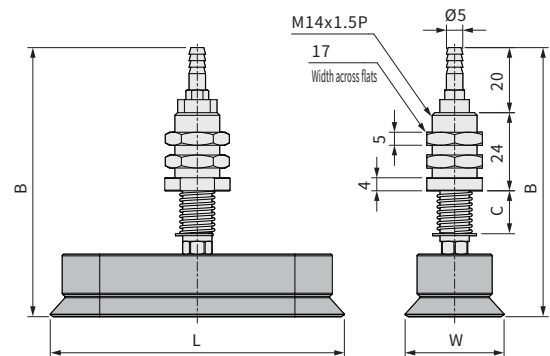


Unit: mm

Model	W	L	Whole length B	D	E	F	Size of PU tube
PLAT-16x50	16.4	50.4	49.6	M6x1 dp8	14	16.5	PU tube 6x4
PLAT-23x60	23.4	60.4	53				
PLAT-30x90	30.4	90.4	55.2				
PLAT-40x80	40.4	80.4	55.2				

PLAFS series/ Vertical entry with spring

► 16x50, 23x60, 30x90, 40x80



Unit: mm

Model	W	L	Stroke 6		Stroke 15		Size of PU tube	Spring compression length
			B	C	B	C		
PLAFS-16x50	16.4	50.4	77.6	13	94.6	30	PU tube 6x4	6, 15
PLAFS-23x60	23.4	60.4	81	13	98	30		
PLAFS-30x90	30.4	90.4	83.2	13	100.2	30		
PLAFS-40x80	40.4	80.4	83.2	13	100.2	30		

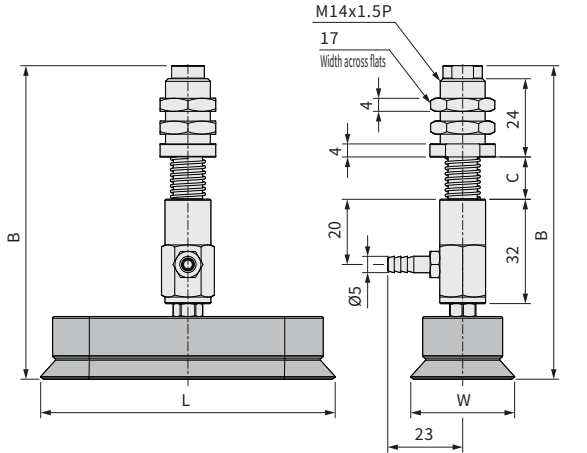
PLA series Long Thin Plate Pad

Dimensions/ PLATS, PLAF-R, PLAK-R, PLAT-R series

CHELIC

■ PLATS series / Side entry with spring

● 16x50, 23x60, 30x90, 40x80

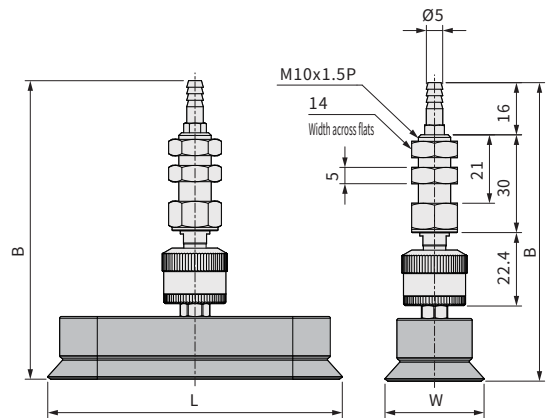


Unit: mm

Model	W	L	Stroke 6		Stroke 15		Size of PU tube	Spring compression length
			B	C	B	C		
PLATS-16x50	16.4	50.4	97.6	13	114.6	30	PU tube 6x4	6, 15
PLATS-23x60	23.4	60.4	101	13	118	30		
PLATS-30x90	30.4	90.4	103.2	13	120.2	30		
PLATS-40x80	40.4	80.4	103.2	13	120.2	30		

■ PLAF-R series/ Vertical entry-Ball joint type

● 16x50, 23x60, 30x90, 40x80



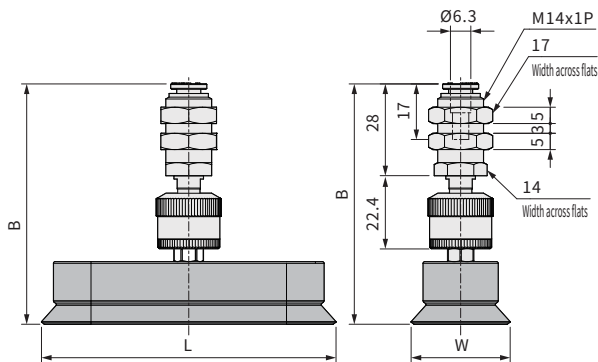
Unit: mm

Model	W	L	Whole length B	Size of PU tube
PLAF-16x50-R	16.4	50.4	86	PU tube 6x4
PLAF-23x60-R	23.4	60.4	89.4	
PLAF-30x90-R	30.4	90.4	91.6	
PLAF-40x80-R	40.4	80.4	91.6	

■ PLAK-R series

Vertical entry with fitting-Ball joint type

● 16x50, 23x60, 30x90, 40x80

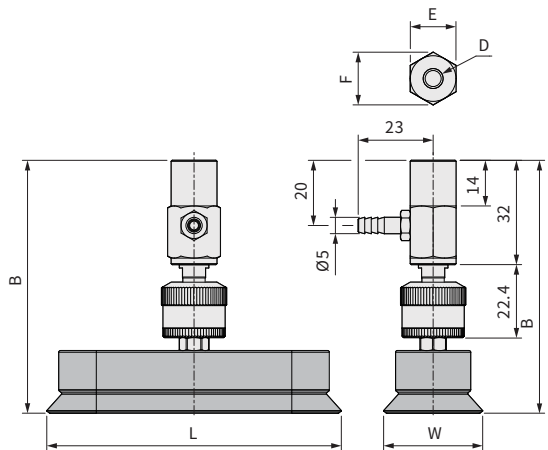


Unit: mm

Model	W	L	Whole length B	Size of PU tube
PLAK-16x50-R	16.4	50.4	68	PU tube 6x4
PLAK-23x60-R	23.4	60.4	71.4	
PLAK-30x90-R	30.4	90.4	73.6	
PLAK-40x80-R	40.4	80.4	73.6	

■ PLAT-R series / Side entry - Ball joint type

● 16x50, 23x60, 30x90, 40x80



Unit: mm

Model	W	L	Whole length B	D	E	F	Size of PU tube
PLAT-16x50-R	16.4	50.4	72	M6x1 dp8	14	16.5	PU tube 6x4
PLAT-23x60-R	23.4	60.4	75.4				
PLAT-30x90-R	30.4	90.4	77.6				
PLAT-40x80-R	40.4	80.4	77.6				

PLA series Long Thin Plate Pad

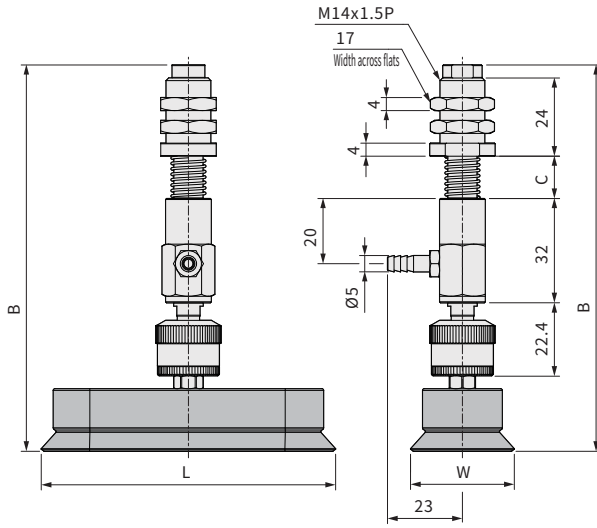
Dimensions/ PLATS-R, PLAFS-R series

CHELIC

PLATS-R series

Vertical entry with spring - Ball joint type

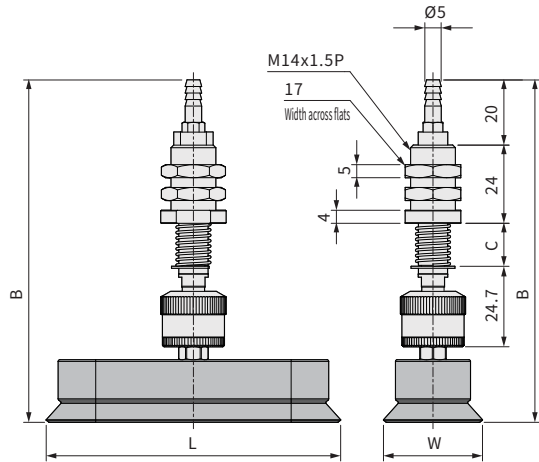
▶ 16x50, 23x60, 30x90, 40x80



PLAFS-R series

Side entry with spring - Ball joint type

▶ 16x50, 23x60, 30x90, 40x80



Unit: mm

Model	W	L	Stroke 6		Stroke 15		Size of PU tube	Spring compression length
			B	C	B	C		
PLAFS-16x50-R	16.4	50.4	120	13	137	30	PU tube 6x4	6, 15
PLAFS-23x60-R	23.4	60.4	123.4	13	140.4	30		
PLAFS-30x90-R	30.4	90.4	125.6	13	142.6	30		
PLAFS-40x80-R	40.4	80.4	125.6	13	142.6	30		

Unit: mm

Model	W	L	Stroke 6		Stroke 15		Size of PU tube	Spring compression length
			B	C	B	C		
PLATS-16x50-R	16.4	50.4	100	13	117	30	PU tube 6x4	6, 15
PLATS-23x60-R	23.4	60.4	103.4	13	120.4	30		
PLATS-30x90-R	30.4	90.4	105.6	13	122.6	30		
PLATS-40x80-R	40.4	80.4	105.6	13	122.6	30		