

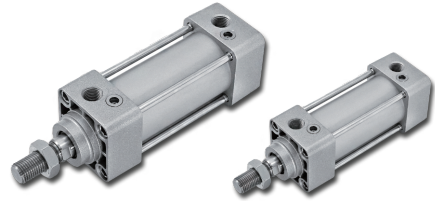
# DMB2 series Air Cylinder (One piston packing)

## Product features, Code of order

CHELIC

### Feature

- More compact and space-saving than the DN/DU series.
- The standard air pressure cushion can effectively reduce the impact force of the piston.
- Various installation accessories are available.



### Specification

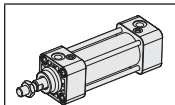
Item	Bore size (mm)	Ø32	Ø40	Ø50	Ø63	Ø80	Ø100
Action		Double acting					
Fluid		Air					
Pressure range (kgf / cm <sup>2</sup> (kPa))		1.5 ~ 9 (150 ~ 900)					
Ambient and fluid temperature (°C)		0 ~ 60					
Piston speed (mm/s)		50 ~ 700					
Standard stroke (mm)		50, 75, 100, 125, 150, 175, 200, 250, 300, 350, 400, 450, 500, ( 600, 700 )					
Material		Aluminum alloy					
Cushion		Adjustable air cushion					
Lubrication		Lubrication free type					
Port size		PT 1/8	PT 1/4		PT 3/8		PT 1/2
Sensing device		With magnet					

### Code of order **DMB2 50 x 250 - LB - Y - 9D - 50U - 2**

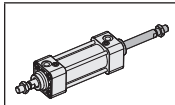
— 1 — 2 — 3 — 4 — 5 — 6 — 7 — 8 —

1	Mark	Model
	DMB2	Standard
	DMB2D	Double rod

- Image



DMB2 : Standard



DMB2D : Double rod

2	Mark	Bore size(mm)
	32	Ø32
	40	Ø40
	50	Ø50
	63	Ø63
	80	Ø80
	100	Ø100

3	Bore size (mm)	Stroke (mm)
	Ø32	50 ~ 700
	Ø40	
	Ø50	
	Ø63	
	Ø80	
	Ø100	

- For special stroke please contact sales representative

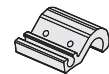
4	Mounting type	
	FA: Front flange	FB: Rear flange
	TC: Central trunnion	CA: Single clevis
	CB: Double clevis	LB: Foot mounting

5	Mark	Accessory	● Image
	I	I joint	
	Y	Y joint	
	PHS	Rod end	

PHS : Rod end	Y : Y joint

6	Sensor switch	
	None : Without sensor switch	
	Please refer to P.8-2.9	Please refer to P.8-2.7
	9B : CS-9B	8B : CS-8B
	Please refer to P.8-2.10	Please refer to P.8-2.7
	9D : CS-9D	8G : CS-8G

7	Mark	Mounting bracket	Bore size(mm)
	None	Without mounting bracket	
	32U	32U	Ø32, Ø40
	50U	50U	Ø50, Ø63
	80U	80U	Ø80, Ø100



8	Mark	Sensor/ Bracket qty
	1	1 Pc
	2	2 Pcs

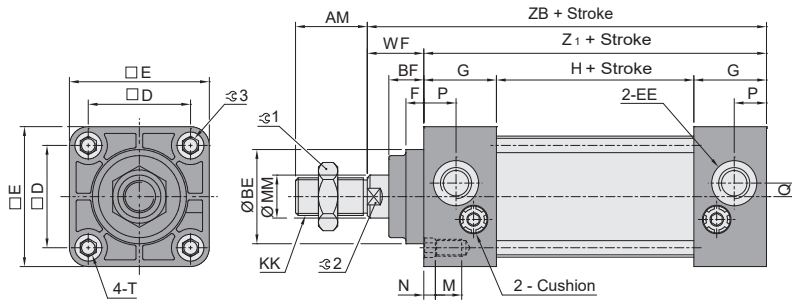
# DMB2 series Air Cylinder (One piston packing)

## Dimensions

CHELIC

### Standard

► DMB2 Ø32 ~ Ø100



DN

DMB2

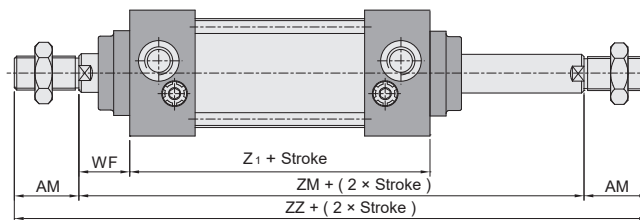
DU

DNK

DNE

### Double rod

► DMB2D Ø32 ~ Ø100



DCK2

DQ

DCQ

Unit: mm

Bore size	AM	BE	BF	D	E	EE	F	G	H	KK	M
Ø32	22	30	13	32.5	47	G 1/8"	4.6	27	30	M10×1.25	9
Ø40	30	35	13	38	52	G 1/4"	5	27	30	M14×1.5	9
Ø50	35	40	14	46.5	65	G 1/4"	6.6	31.5	31	M18×1.5	10
Ø63	35	45	14	56.5	75	G 3/8"	6.5	31.5	31	M18×1.5	10
Ø80	40	45	20	72	95	G 3/8"	8.5	38	38	M22×1.5	11
Ø100	40	55	20	89	114	G 1/2"	9	38	38	M26×1.5	11

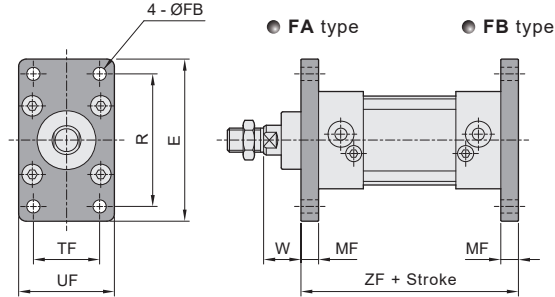
Bore size	MM	N	P	Q	T	WF	Z1	ZB	∠1	∠2	∠3
Ø32	12	4	13	5	M6×1	25	84	109	16	10	6
Ø40	16	4	14	5	M6×1	21	84	105	22	14	6
Ø50	20	5	16	5	M8×1.25	23	94	117	27	18	8
Ø63	20	5	17	9	M8×1.25	23	94	117	26	18	8
Ø80	25	5	19	11.5	M10×1.5	32	114	146	32	22	10
Ø100	30	5	19	17	M10×1.5	32	114	146	34	26	10

# DMB2 series Air Cylinder (One piston packing)

## Dimensions/ Accessory

CHELIC

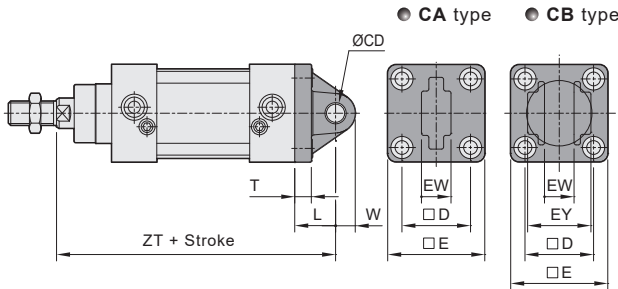
### Front flange - FA FB



Unit: mm

Bore size	E	FB	MF	R	TF	UF	W	ZF
Ø32	79	7	10	64	32	50	15	104
Ø40	90	9	10	72	36	55	11	108
Ø50	110	9	12	90	45	65	11	118
Ø63	120	9	12	100	50	75	11	118
Ø80	153	14	16	126	63	95	16	146
Ø100	178	14	16	150	75	115	16	146

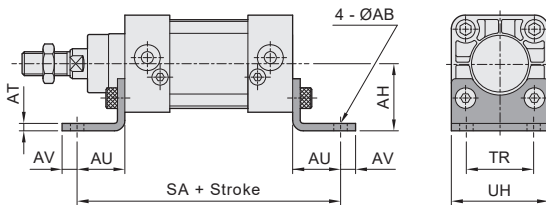
### Clevis Mounting - CA Single clevis CB Double clevis



Unit: mm

Bore size	CD	D	E	EW	EY	L	T	W	ZT
Ø32	10	32.5	46	14	28	23	10	10.5	132
Ø40	10	38	52	14	28	23	10	11	128
Ø50	14	46.5	65	20	40	30	13	15	147
Ø63	14	56.5	75	20	40	30	13	15	147
Ø80	22	72	95	30	60	42	16	23	188
Ø100	22	89	114	30	60	42	16	23	188

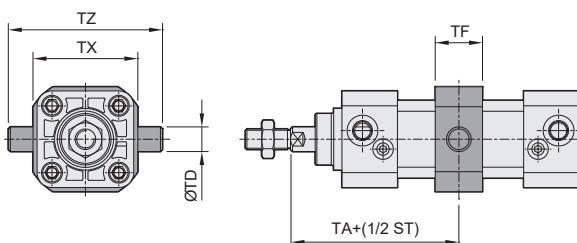
### Foot mounting - LB



Unit: mm

Bore size	AB	AH	AT	AU	AV	SA	TR	UH
Ø32	7	30	3	22	8	128	32	47
Ø40	9	33	3	24	11	132	38	55
Ø50	9	40	3	27	11	148	46	65
Ø63	12	45	3.5	27	14	148	56	75
Ø80	12	55	5.8	30	14	174	72	95
Ø100	14	65	5.8	32	16	178	89	115

### Central trunnion - TC



Unit: mm

Bore size	TA	ØTD	TF	TX	TZ
Ø32	67	Ø12	23	50	74
Ø40	63	Ø16	20	63	95
Ø50	70	Ø16	22	75	107
Ø63	70	Ø20	28	90	130
Ø80	89	Ø20	34	110	150
Ø100	89	Ø25	34	132	182

# DMB2 series Air Cylinder (One piston packing)

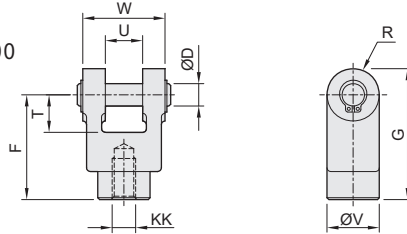
## Dimensions/ Accessory

CHELIC

### Accessory

#### Y join

- DMB2 (YB) series  
Suitable for:  $\varnothing 32 \sim \varnothing 100$

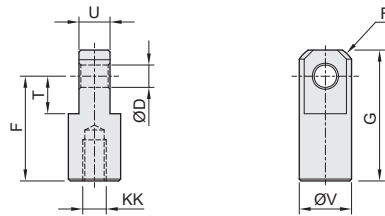


Unit: mm

Model	Bore size (mm)	D	F	G	KK	R	T	U	V	W
YB - M10×1.25	Ø32	10	30	40	M10 × 1.25	10	16	14	20	28
YB - M14×1.5	Ø40	10	40	51	M14 × 1.5	11	19	14	22	28
YB - M18×1.5	Ø50, Ø63	14	50	64	M18 × 1.5	14	24	20	28	40
YB - M22×1.5	Ø80	22	65	85	M22 × 1.5	20	34	30	40	60
YB - M26×1.5	Ø100	22	65	85	M26 × 1.5	20	34	30	40	60

#### I join

- DMB2 (IB) series  
Suitable for:  $\varnothing 32 \sim \varnothing 100$

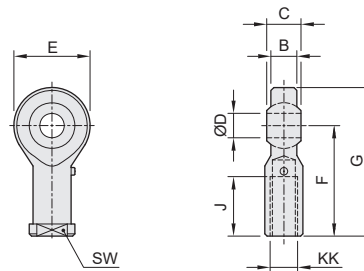


Unit: mm

Model	Bore size (mm)	D	F	G	KK	R	T	U	V	W
IB - M10×1.25	Ø32	10	30	40	M10 × 1.25	10	16	14	20	28
IB - M14×1.5	Ø40	10	40	51	M14 × 1.5	11	19	14	22	28
IB - M18×1.5	Ø50, Ø63	14	50	64	M18 × 1.5	14	24	20	28	40
IB - M22×1.5	Ø80	22	65	85	M22 × 1.5	20	34	30	40	60
IB - M26×1.5	Ø100	22	65	85	M26 × 1.5	20	34	30	40	60

#### Rod end

- DMB2 (PHSB) series  
Suitable for:  $\varnothing 32 \sim \varnothing 100$



Unit: mm

Model	Bore size (mm)	D	F	G	KK	R	T	U	V
PHSB - M10×1.25	Ø32	10	30	40	M10 × 1.25	12	16	14	20
PHSB - M14×1.5	Ø40	10	40	50	M14 × 1.5	12.5	19	14	22
PHSB - M18×1.5	Ø50, Ø63	14	50	64	M18 × 1.5	16.5	24	20	28
PHSB - M22×1.5	Ø80	22	60	80	M22 × 1.5	23.5	34	30	40
PHSB - M26×1.5	Ø100	22	60	80	M26 × 1.5	23.5	34	30	40

DN

DMB2

DU

DNK

DNE

DCK2

DQ

DCQ

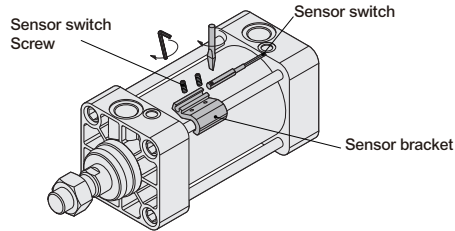
# DMB2 series Air Cylinder (One piston packing)

## Sensor switch operating range and the setting

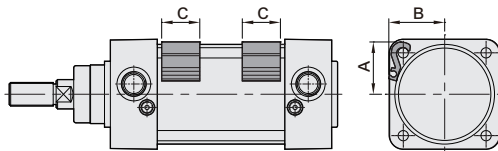
CHELIC

### Mounting of sensor switch

#### Accessory and assembly



#### Sensor switch mounting type/ Dimension (Reference)



		Unit: mm					
Bore size	Ø32	Ø40	Ø50	Ø63	Ø80	Ø100	
A	22.5	25.4	30.5	35.6	44.5	53	
B	24	27.8	32.5	38	46.9	54.5	
C	26	26	26	26	26	26	

### Setting range

Sensor switch is fixed on the cylinder body. The magnetic piston head will activate the Sensor switch when it enters the operating range. It has 0.5mm differential.

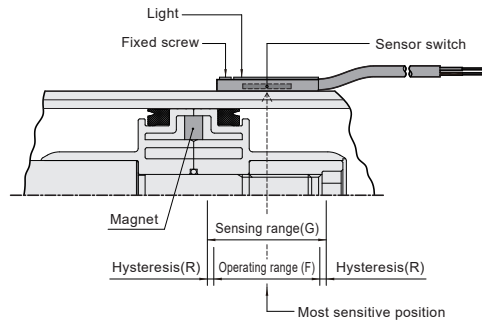
### Operating range

When piston head moves the switch setting and adjustment will be based on the responding range generated by the magnetic field and the switch. (Please refer to the below table)

Unit: mm

Model	CS-9D(B)	
Bore size	Operating range (F)	Hysteresis(R)
Ø32	6	2 ~ 3
Ø40	8	2 ~ 3
Ø50	9	2 ~ 3
Ø63	10	2 ~ 3
Ø80	13	2 ~ 3
Ø100	14	2 ~ 3

### Sensor switch setting and operating range



### Sensor switch introduction

**CS-9B**  
Voltage: DC 5 ~ 120V  
AC 5 ~ 120V

**CS-9D**  
Voltage: DC 5 ~ 120V  
AC 5 ~ 120V

**CS-8B**  
Voltage: DC 5 ~ 30V

**CS-8G**  
Voltage: DC 5 ~ 30V