

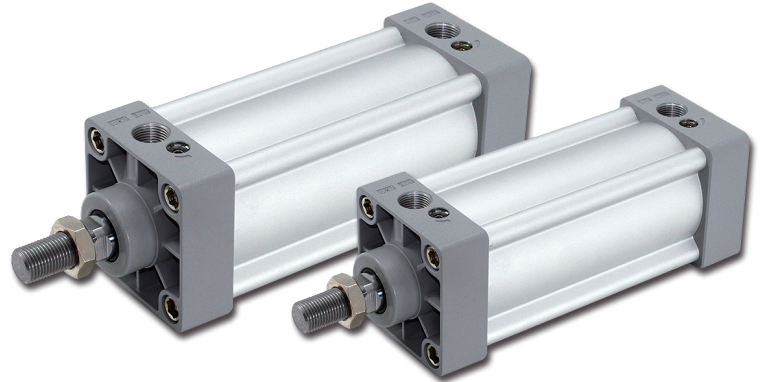
# DAU standard cylinder (No tie rod)

## Features and specifications

**CHELIC PNEUMATIC**

### ► Feature

- **Various installation types:**  
Variety of installation accessories are available.
- **Lubrication-free:**  
Use oil-impregnated bearings so that the piston rod does not need to be lubricated.
- **High temperature resistance:**  
Use high temperature resistant sealing materials to make the cylinder work normally at a high temperature of 150 °C ( customization).
- **Cushioning:**  
Except for standard cushioning, the end of the cylinder is also equipped with adjustable cushioning, which makes the cylinder smooth and shock-free when reversing.
- **With magnet:**  
A permanent magnet is installed on the cylinder piston, which can activate the magnetic switch installed on the cylinder to sense the movement position of the cylinder.



### ► Specification

Item	Bore size (mm)	32	40	50	63	80	100
Action		Double acting					
Fluid		Air					
Mounting type		FA, FB, CA, CB, LB					
Pressure range	Kgf/cm <sup>2</sup>	1 ~ 9.0					
Proof pressure	Kgf/cm <sup>2</sup>	13.5					
Ambient and fluid temperature	°C	-5 ~ 70					
Piston speed	mm/s	50 ~ 800					
Cushion		Adjustable cushion					
Cushion Stroke	mm	24					
Port size		G1/8	G1/4		G3/8		G1/2

### ► Stroke

Bore size (mm)	Standard stroke	Max. stroke	Allowable stroke
32	25 50 75 100 125 150 175 200 250 300 350 400 450 500	1000	2000
40	25 50 75 100 125 150 175 200 250 300 350 400 450 500 600 700 800	1200	2000
50	25 50 75 100 125 150 175 200 250 300 350 400 450 500 600 700 800 900 1000	1200	2000
63	25 50 75 100 125 150 175 200 250 300 350 400 450 500 600 700 800 900 1000	1500	2000
80	25 50 75 100 125 150 175 200 250 300 350 400 450 500 600 700 800 900 1000	1500	2000
100	25 50 75 100 125 150 175 200 250 300 350 400 450 500 600 700 800 900 1000	1500	2000

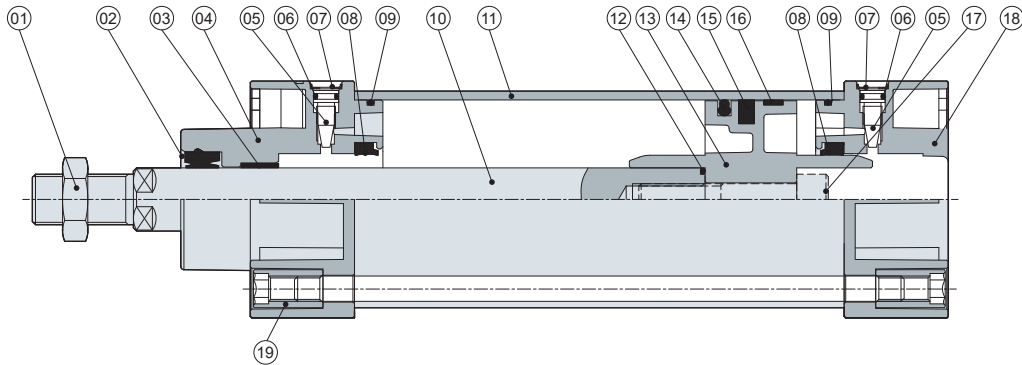
※ Please contact sales person for special strokes for cylinder.

# DAU standard cylinder (No tie rod)

## Internal structure and Code of order

**CHELIC PNEUMATIC**

### Internal structure

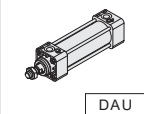
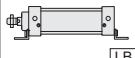
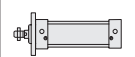



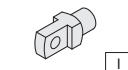

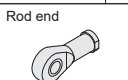
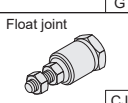

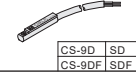
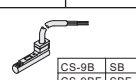
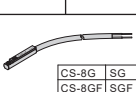


### Components and material list

No.	Item	Material	No.	Item	Material
01	Nut	Carbon steel	11	Cylinder tube	Aluminum alloy
02	Dust proof seal	NBR	12	Piston rod seal	NBR
03	Oil bearing	Alloyed steel	13	Piston	Aluminum alloy
04	Front cover	Aluminum alloy	14	Piston seal	NBR
05	Needle valve	Brass	15	Magnet	Ferrite
06	O-ring	NBR	16	Wear ring	POM
07	Snap ring	Spring steel	17	Piston rod screw	Carbon steel
08	Cushion seal	NBR	18	Rear cover	Aluminum alloy
09	Cylinder seal	NBR	19	Nut	Carbon steel
10	Piston rod	Carbon steel			

### Code of order

**DAU** - **50** × **250** - **L1** - **LB** - **Y** - **PF7-1** - **SD** - **2**

1	2	3	4	5	6	7	8	9																																
<b>Model</b>  DAU : Standard type	<b>Bore size</b> 32 - Ø32 mm 40 - Ø40 mm 50 - Ø50 mm 63 - Ø63 mm 80 - Ø80 mm 100 - Ø100 mm	<b>Stroke</b> Ø32 -25 ~ 500 mm Ø40 -25 ~ 800 mm Ø50 -25 ~ 1000 mm Ø63 -25 ~ 1000 mm Ø80 -25 ~ 1000 mm Ø100 -25 ~ 1000 mm	<b>Adjustable stroke</b> L1 : 25 mm L2 : 50 mm L3 : 75 mm	<b>Mounting type</b> None: without Accessory  LB  FA  FB  CA  CB	<b>Accessory</b> None: without Accessory  I connector I  Rod clevis Y  Rod end G  Float joint CJ	<b>Sensor bracket</b>  PF7-□ ■ Sensor bracket please refer to page 189 <table border="1"> <thead> <tr> <th>Model</th> <th>Bore size</th> </tr> </thead> <tbody> <tr> <td>PF7-1</td> <td>Ø32-Ø40</td> </tr> <tr> <td>PF7-2</td> <td>Ø50-Ø63</td> </tr> <tr> <td>PF7-3</td> <td>Ø80</td> </tr> <tr> <td>PF7-4</td> <td>Ø100</td> </tr> <tr> <td>PF7-5</td> <td>Ø125</td> </tr> <tr> <td>PF7-6</td> <td>Ø160-Ø200</td> </tr> </tbody> </table>	Model	Bore size	PF7-1	Ø32-Ø40	PF7-2	Ø50-Ø63	PF7-3	Ø80	PF7-4	Ø100	PF7-5	Ø125	PF7-6	Ø160-Ø200	<b>Sensor switch</b>  <table border="1"> <thead> <tr> <th>Model</th> <th>Bore size</th> </tr> </thead> <tbody> <tr> <td>CS-9D</td> <td>SD</td> </tr> <tr> <td>CS-9DF</td> <td>SDF</td> </tr> </tbody> </table> SD : Reed sensor switch SDF : Metal reed sensor switch  <table border="1"> <thead> <tr> <th>Model</th> <th>Bore size</th> </tr> </thead> <tbody> <tr> <td>CS-9B</td> <td>SB</td> </tr> <tr> <td>CS-9BF</td> <td>SBF</td> </tr> </tbody> </table> SB : Reed sensor switch SBF : Metal reed sensor switch  <table border="1"> <thead> <tr> <th>Model</th> <th>Bore size</th> </tr> </thead> <tbody> <tr> <td>CS-8G</td> <td>SG</td> </tr> <tr> <td>CS-8GF</td> <td>SGF</td> </tr> </tbody> </table> SG : Solid state SGF : Metal solid state sensor switch	Model	Bore size	CS-9D	SD	CS-9DF	SDF	Model	Bore size	CS-9B	SB	CS-9BF	SBF	Model	Bore size	CS-8G	SG	CS-8GF	SGF	<b>Sensor quantity</b> 1 : 1 PCS 2 : 2 PCS
Model	Bore size																																							
PF7-1	Ø32-Ø40																																							
PF7-2	Ø50-Ø63																																							
PF7-3	Ø80																																							
PF7-4	Ø100																																							
PF7-5	Ø125																																							
PF7-6	Ø160-Ø200																																							
Model	Bore size																																							
CS-9D	SD																																							
CS-9DF	SDF																																							
Model	Bore size																																							
CS-9B	SB																																							
CS-9BF	SBF																																							
Model	Bore size																																							
CS-8G	SG																																							
CS-8GF	SGF																																							

**DAUD** : Standard cylinder(Double rod)  
**DAUL** : Standard cylinder(Adjustable stroke)

DAC

DAU

DAI

DNG

DMB2

Sensor mounting bracket

DNF

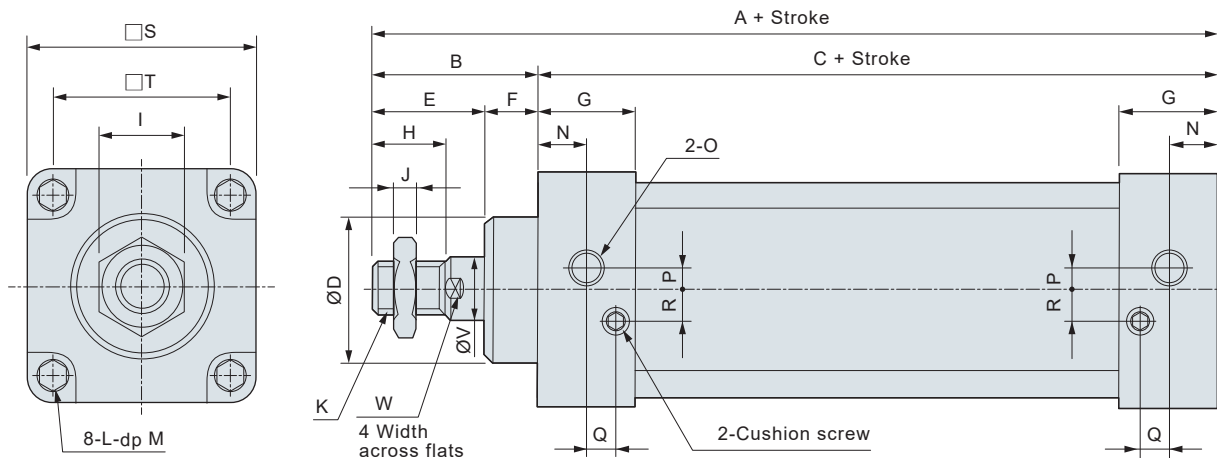
PCB3

# DAU standard cylinder (No tie rod)

## External dimensions

**CHELIC PNEUMATIC**

### DAU Ø32 ~ Ø100 (Standard type)



### Dimension

Unit: mm

Bore size \ Mark	A	B	C	D	E	F	G	H	I	J	K	L
32	140	47	93	28	32	15	27.5	22	17	6	M10 x 1.25	M6 x 1
40	142	49	93	32	34	15	27.5	24	17	7	M12 x 1.25	M6 x 1
50	150	57	93	38	42	15	27.5	32	23	8	M16 x 1.5	M6 x 1
63	153	57	96	38	42	15	27.5	32	23	8	M16 x 1.5	M8 x 1.25
80	183	75	108	47	54	21	33	40	26	10	M20 x 1.5	M10 x 1.5
100	189	75	114	47	54	21	33	40	26	10	M20 x 1.5	M10 x 1.5

Unit: mm

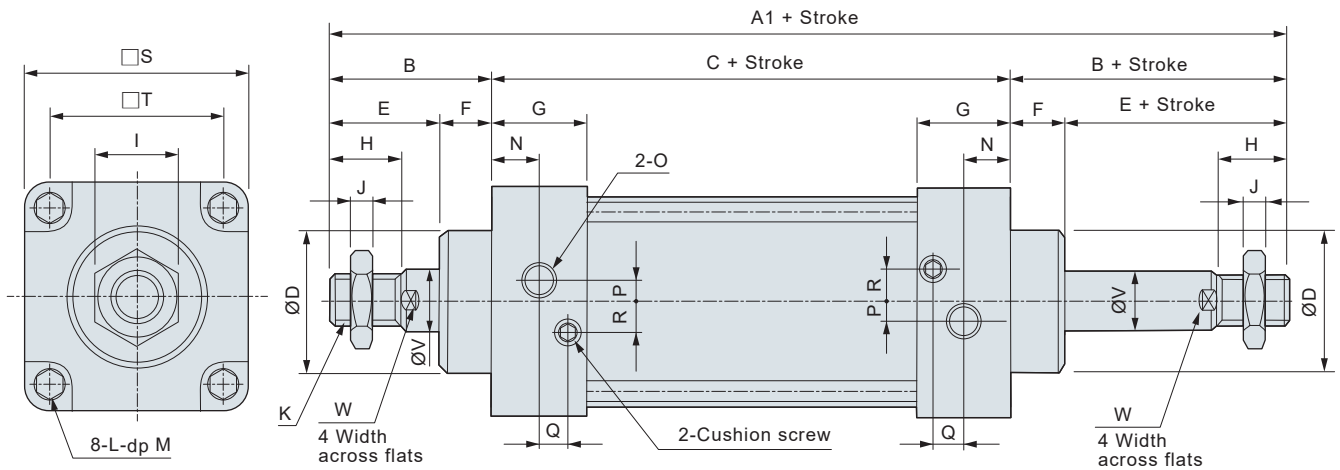
Bore size \ Mark	M	N	O	P	Q	R	S	T	V	W
32	9.5	13.7	G1/8	3.5	7.5	7	45	33	12	10
40	9.5	13.5	G1/4	6	8.2	9	50	37	16	14
50	9.5	13.5	G1/4	8.5	8.2	9	62	47	20	17
63	9.5	13.5	G3/8	7	8.2	8.5	75	56	20	17
80	11.5	16.5	G3/8	10	9.5	14	94	70	25	22
100	11.5	16.5	G1/2	11	9.5	14	112	84	25	22

# DAUD Standard cylinder (No tie rod)

## External dimensions

**CHELIC PNEUMATIC**

### DAUD Ø32 ~ Ø100 (Double rod type)



DAC

DAU

DAI

DNG

DMB2

Sensor  
mounting  
bracket

DNF

PCB3

### Dimension

Unit: mm

Bore size \ Mark	A1	B	C	D	E	F	G	H	I	J	K	L
32	187	47	93	28	32	15	27.5	22	17	6	M10 x 1.25	M6 x 1
40	191	49	93	32	34	15	27.5	24	17	7	M12 x 1.25	M6 x 1
50	207	57	93	38	42	15	27.5	32	23	8	M16 x 1.5	M6 x 1
63	210	57	96	38	42	15	27.5	32	23	8	M16 x 1.5	M8 x 1.25
80	258	75	108	47	54	21	33	40	26	10	M20 x 1.5	M10 x 1.5
100	264	75	114	47	54	21	33	40	26	10	M20 x 1.5	M10 x 1.5

Unit: mm

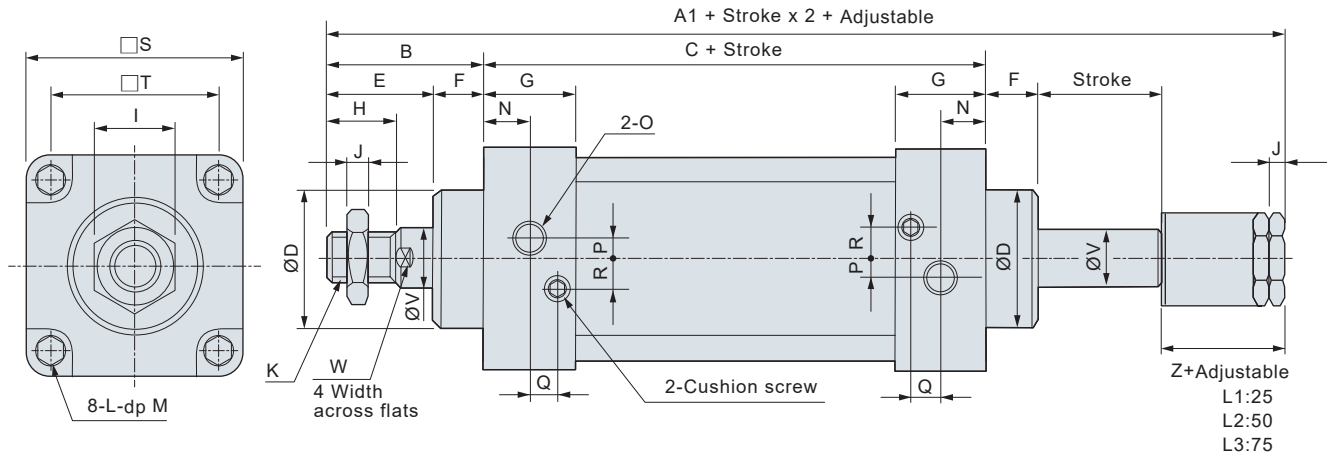
Bore size \ Mark	M	N	O	P	Q	R	S	T	V	W
32	9.5	13.7	G1/8	3.5	7.5	7	45	33	12	10
40	9.5	13.5	G1/4	6	8.2	9	50	37	16	13
50	9.5	13.5	G1/4	8.5	8.2	9	62	47	20	17
63	9.5	13.5	G3/8	7	8.2	8.5	75	56	20	17
80	11.5	16.5	G3/8	10	9.5	14	94	70	25	22
100	11.5	16.5	G1/2	11	9.5	14	112	84	25	22

# DAUL Standard cylinder (No tie rod)

## External dimensions

**CHELIC PNEUMATIC**

### DAUL Ø32 ~ Ø100 ( Adjustable stroke )



### Dimension

Unit: mm

Bore size \ Mark	A1	B	C	D	E	F	G	H	I	J	K	L
32	182	47	93	28	32	15	27.5	22	17	6	M10 x 1.25	M6 x 1
40	185	49	93	32	34	15	27.5	24	17	7	M12 x 1.25	M6 x 1
50	196	57	93	38	42	15	27.5	32	23	8	M16 x 1.5	M6 x 1
63	199	57	96	38	42	15	27.5	32	23	8	M16 x 1.5	M8 x 1.25
80	243	75	108	47	54	21	33	40	26	10	M20 x 1.5	M10 x 1.5
100	249	75	114	47	54	21	33	40	26	10	M20 x 1.5	M10 x 1.5

Unit: mm

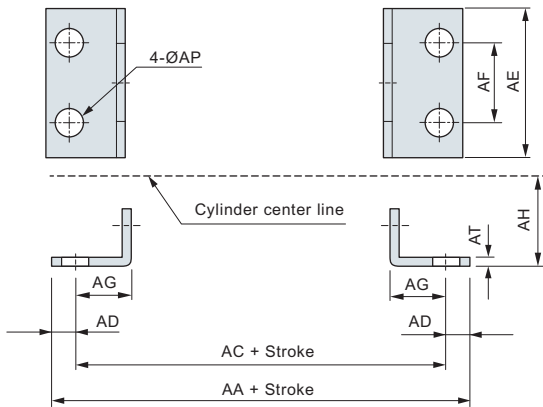
Bore size \ Mark	M	N	O	P	Q	R	S	T	V	W	Z
32	9.5	13.7	G1/8	3.5	7.5	7	45	33	12	10	21
40	9.5	13.5	G1/4	6	8.2	9	50	37	16	14	21
50	9.5	13.5	G1/4	8.5	8.2	9	62	47	20	17	23
63	9.5	13.5	G3/8	7	8.2	8.5	75	56	20	17	23
80	11.5	16.5	G3/8	10	9.5	14	94	70	25	22	29
100	11.5	16.5	G1/2	11	9.5	14	112	84	25	22	29

# DAU standard cylinder (No tie rod)

## Mounting options

**CHELIC PNEUMATIC**

### ▶ Axial foot – **LB**

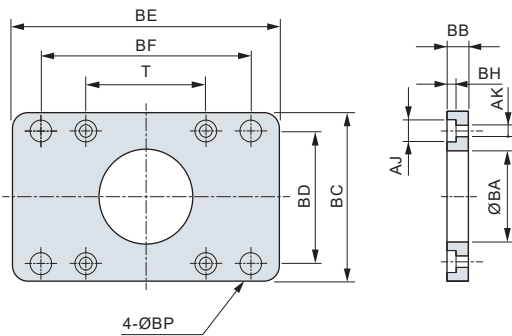


### ▶ Dimension

Unit: mm

Bore size \ Mark	32	40	50	63	80	100
AA	153	169	173	184	200	210
AC	134	140	149	158	168	174
AD	9.5	14.5	12	13	16	18
AE	50	57	68	80	97	112
AF	33	36	47	56	70	84
AG	20.5	23.5	28	31	30	30
AH	28	30	36.5	41	49	57
AP	9	12	12	12	14	14
AT	3	3	3	3	4	4

### ▶ Flange – **FA** Front flange **FB** End flange

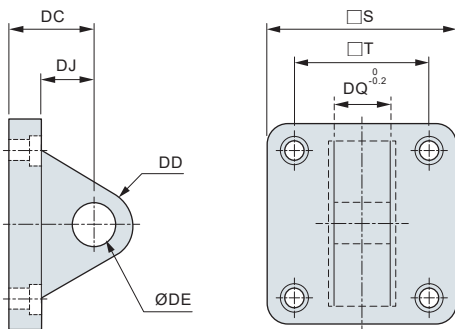


### ▶ Dimension

Unit: mm

Bore size \ Mark	32	40	50	63	80	100
AJ	10.5	10.5	10.5	13.5	16.5	16.5
AK	6.5	6.5	6.5	8.5	10.5	10.5
BA	28.3	32.3	38.3	38.3	47.3	47.3
BB	10	10	10	12	16	16
BC	47	52	65	75	95	115
BD	33	36	47	56	70	84
BE	72	84	104	116	143	162
BF	58	70	86	98	119	138
BH	6.5	6.5	6.5	8.5	10.5	10.5
BP	7	7	9	9	11	11
T	33	37	47	56	70	84

### ▶ Clevis – **CA** Single clevis

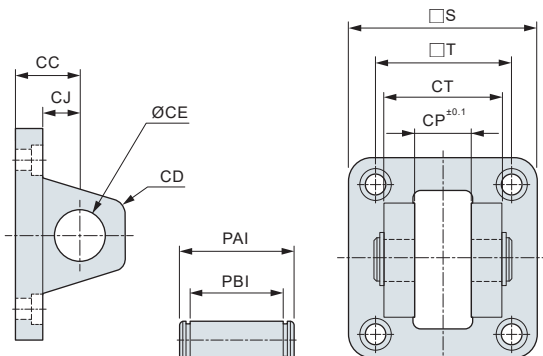


### ▶ Dimension

Unit: mm

Bore size \ Mark	32	40	50	63	80	100
S	48	50	62	75	94	112
T	33	37	47	56	70	84
DC	34	34	34	34	48	48
DD	14	14	15	15	20	20
DE	12	14	14	14	20	20
DJ	24	24	24	24	34	34
DQ	16	20	20	20	32	32

### ▶ Clevis – **CB** Double clevis



### ▶ Dimension

Unit: mm

Bore size \ Mark	32	40	50	63	80	100
CC	19	19	19	19	32	32
CD	5	5	3	3	8	8
CE	12	14	14	14	20	20
CJ	11	11	11	11	18	18
CP	16.3	20.3	20.3	20.3	32.3	32.3
CT	32	44	52	52	64	64
PAI	39	51.8	59.8	59.8	72	72
PBI	32.8	44.8	52.8	52.8	64.8	64.8
S	48	50	62	75	94	112
T	33	37	47	56	70	84

DAC

DAU

DAI

DNG

DMB2

Sensor mounting bracket

DNF

PCB3

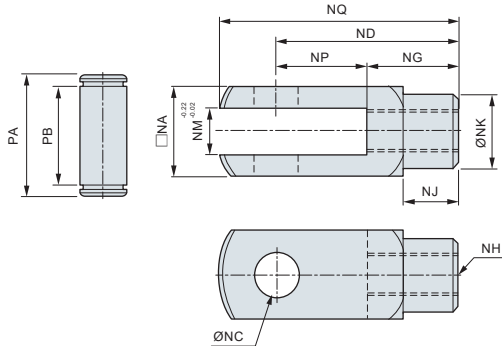
# DAU standard cylinder (No tie rod)

## Rod end joint

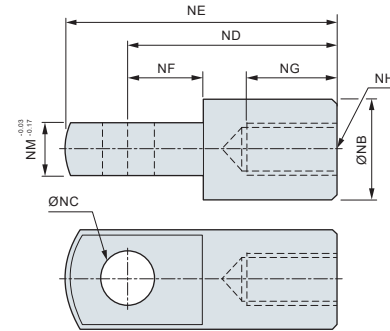
**CHELIC PNEUMATIC**

### Joint specification

#### Rod clevis



#### I connector

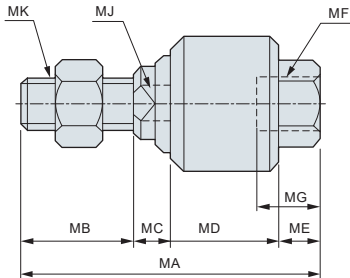


### Dimension

Unit: mm

Bore size	Mark	NA	NB	NC	ND	NE	NF	NG	NH	NJ	NK	NM	NP	NQ	PA	PB
32		20	20	10	40	52	15	20	M10 x 1.25	15	18	10	20	52	25	19.5
40		24	24	12	48	67	24	24	M12 x 1.25	18	20	12	24	62	32.8	26.5
50		32	32	16	64	89	32	32	M16 x 1.5	24	26	16	32	83	39.3	33
63		32	32	16	64	89	32	32	M16 x 1.5	24	26	16	32	83	39.3	33
80		40	40	20	80	112	40	40	M20 x 1.5	30	34	20	40	105	53.3	45
100		40	40	20	80	112	40	40	M20 x 1.5	30	34	20	40	105	53.3	45

#### Floating joint

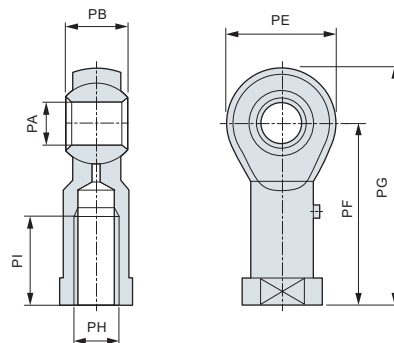


### Dimension

Unit: mm

Bore size	Mark	MA	MB	MC	MD	ME	MF	MG	MJ	MK
32		58	22	7	21	8	M10 x 1.25	13	10	M10 x 1.25
40		64	22	8	24	10	M12 x 1.25	15	12	M12 x 1.25
50		90	27	12	36	15	M16 x 1.5	23	17	M16 x 1.5
63		90	27	12	36	15	M16 x 1.5	23	17	M16 x 1.5
80		102	32	13	40	17	M20 x 1.5	28	22	M20 x 1.5
100		102	32	13	40	17	M20 x 1.5	28	22	M20 x 1.5

#### Rod end



### Dimension

Unit: mm

Bore size	Mark	PA	PB	PE	PF	PG	PH	PI
32		10	14	28	43	57	M10 x 1.25	20
40		12	16	32	50	66	M12 x 1.25	22
50		16	21	42	64	85	M16 x 1.5	28
63		16	21	42	64	85	M16 x 1.5	28
80		20	25	50	77	102	M20 x 1.5	33
100		20	25	50	77	102	M20 x 1.5	33