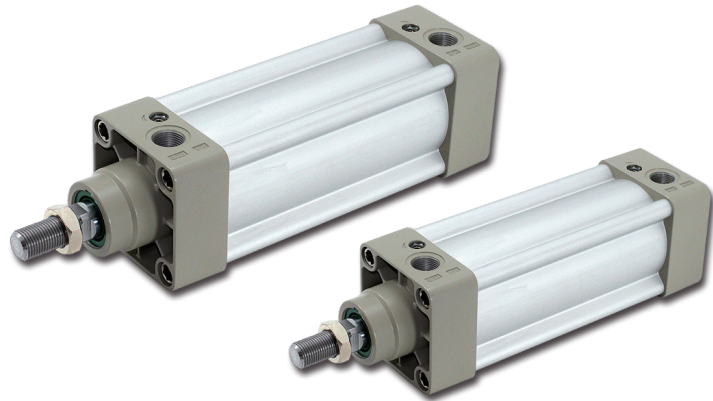


DAI ISO 15552 Standard cylinder

Features and specifications

CHELIC PNEUMATIC

► Feature



- ISO15552 (original ISO6431) standard cylinder.
- The piston seal is composed of two Y shape seals of single direction structure which has compensation function long service life and low startup pressure.
- The buffer adjustment of cylinder is smooth and steady.
- Variety of cylinder and installation accessories are available.

► Specification

Item	Bore size (mm)	32	40	50	63	80	100	125	160	200
Action		Double acting								
Fluid		Air								
Mounting type	DAI	FA, FB, CA, CB, LNG, LB								
	DAID	FA, LB								
	DAIL	FA, LB								
Pressure range	Kgf/cm ²	0.1 ~ 1.0 MPa (14 ~ 145 Psi)								
Proof pressure	Kgf/cm ²	1.5 MPa (215 Psi)								
Ambient and fluid temperature	°C	-20 ~ 80								
Piston speed	mm/s	30 ~ 800						30 ~ 500		
Stroke tolerance		0 ~ 250 ^{+1.0} ₀		251 ~ 1000 ^{+1.4} ₀			1001 ~ 1500 ^{+1.8} ₀		1750 ~ 2500 ^{+1.8} ₀	
Cushion		Adjustable cushion								
Cushion Stroke	mm	27		30		36		40	50	
Port size		G1/8	G1/4		G3/8		G1/2		G3/4	

► Stroke

Bore size (mm)	Standard stroke	Max. stroke	Allowable stroke
32	25 50 75 100 125 150 175 200 250 300 350 400 450 500	1000	1800
40	25 50 75 100 125 150 175 200 250 300 350 400 450 500 600 700 800	1200	1800
50	25 50 75 100 125 150 175 200 250 300 350 400 450 500 600 700 800 900 1000	1200	1800
63	25 50 75 100 125 150 175 200 250 300 350 400 450 500 600 700 800 900 1000	1500	1800
80	25 50 75 100 125 150 175 200 250 300 350 400 450 500 600 700 800 900 1000	1500	1800
100	25 50 75 100 125 150 175 200 250 300 350 400 450 500 600 700 800 900 1000	1500	1800
125	25 50 75 100 125 150 175 200 250 300 350 400 450 500 600 700 800 900 1000	1500	1800
160	25 50 75 100 125 150 175 200 250 300 350 400 450 500 600 700 800 900 1000	1500	2000
200	25 50 75 100 125 150 175 200 250 300 350 400 450 500 600 700 800 900 1000	1500	2000

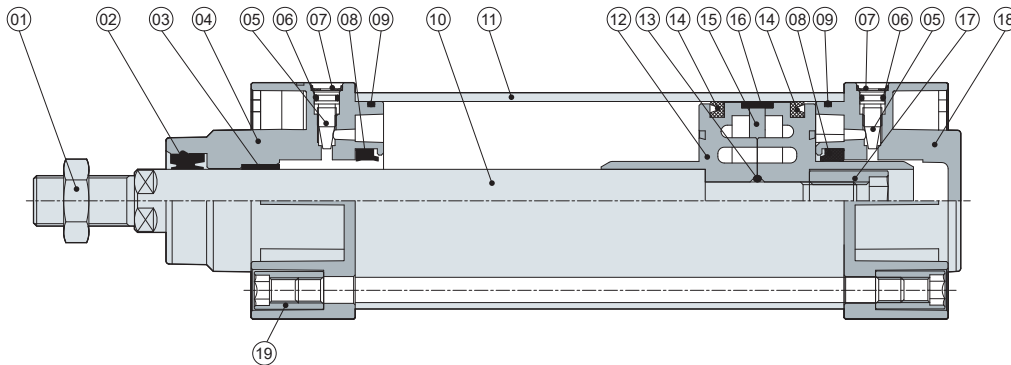
※ Please contact sales person for special strokes for cylinder.

DAI ISO 15552 Standard cylinder

Internal structure and Code of order

CHELIC PNEUMATIC

Internal structure



Components and material list

No.	Item	Material	No.	Item	Material
01	Nut	Carbon steel	11	Cylinder tube	Aluminum alloy
02	Dust proof seal	NBR	12	Piston	Aluminum alloy
03	Oil bearing	Alloyed steel	13	Rod washer	NBR
04	Front cover	Aluminum alloy	14	Piston seal	NBR
05	Needle valve	Copper	15	Magnet	Ferrite
06	O-ring	NBR	16	Wear ring	POM
07	Snap ring	Spring steel	17	Piston rod screw	Carbon steel
08	Cushion seal	NBR	18	Rear cover	Aluminum alloy
09	Cylinder seal	NBR	19	Nut	Carbon steel
10	Piston rod	Carbon steel			

Code of order

1	2	3	4	5	6	7	8	9														
DAI	50	200	L1	LB	Y	PF7-1	9D	2														
Model	Bore size	Stroke	Adjustable stroke	Mounting type	Accessory	Sensor bracket	Sensor switch	Sensor quantity														
<p>DAI : Standard type</p>	32 - Ø32 mm 40 - Ø40 mm 50 - Ø50 mm 63 - Ø63 mm 80 - Ø80 mm 100 - Ø100 mm 125 - Ø125 mm 160 - Ø160 mm 200 - Ø200 mm	Ø32 - 25 ~ 500 mm Ø40 - 25 ~ 800 mm Ø50 - 25 ~ 1000 mm Ø63 - 25 ~ 1000 mm Ø80 - 25 ~ 1000 mm Ø100 - 25 ~ 1000 mm Ø125 - 25 ~ 1000 mm Ø160 - 25 ~ 1000 mm Ø200 - 25 ~ 1000 mm	L1 : 25 mm L2 : 50 mm L3 : 75 mm	None: without Accessory Axial foot (LB) Front flange (FA) End flange (FB) Single clevis (CA) Double clevis (CB) Single clevis fixed plate (LNG)	None: without Accessory I connector (I) Rod clevis (Y) Rod end (G)	<p>PF7-□</p> <p>■ Sensor bracket please refer to page 189</p> <table border="1"> <thead> <tr> <th>Model</th> <th>Bore size</th> </tr> </thead> <tbody> <tr> <td>PF7-1</td> <td>Ø32-Ø40</td> </tr> <tr> <td>PF7-2</td> <td>Ø50-Ø63</td> </tr> <tr> <td>PF7-3</td> <td>Ø80</td> </tr> <tr> <td>PF7-4</td> <td>Ø100</td> </tr> <tr> <td>PF7-5</td> <td>Ø125</td> </tr> <tr> <td>PF7-6</td> <td>Ø160-Ø200</td> </tr> </tbody> </table>	Model	Bore size	PF7-1	Ø32-Ø40	PF7-2	Ø50-Ø63	PF7-3	Ø80	PF7-4	Ø100	PF7-5	Ø125	PF7-6	Ø160-Ø200	<p>CS-9D</p> <p>None: Without sensor switch 9D : Sensor switch mark(CS-9D) 9B : Sensor switch mark(CS-9B)</p>	1 : 1 PCS 2 : 2 PCS
Model	Bore size																					
PF7-1	Ø32-Ø40																					
PF7-2	Ø50-Ø63																					
PF7-3	Ø80																					
PF7-4	Ø100																					
PF7-5	Ø125																					
PF7-6	Ø160-Ø200																					
<p>DAID : Standard cylinder (Double rod)</p>																						
<p>DAIL : Standard cylinder (Adjustable stroke)</p>																						

DAC

DAU

DAI

DNG

DMB2

Sensor mounting bracket

DNF

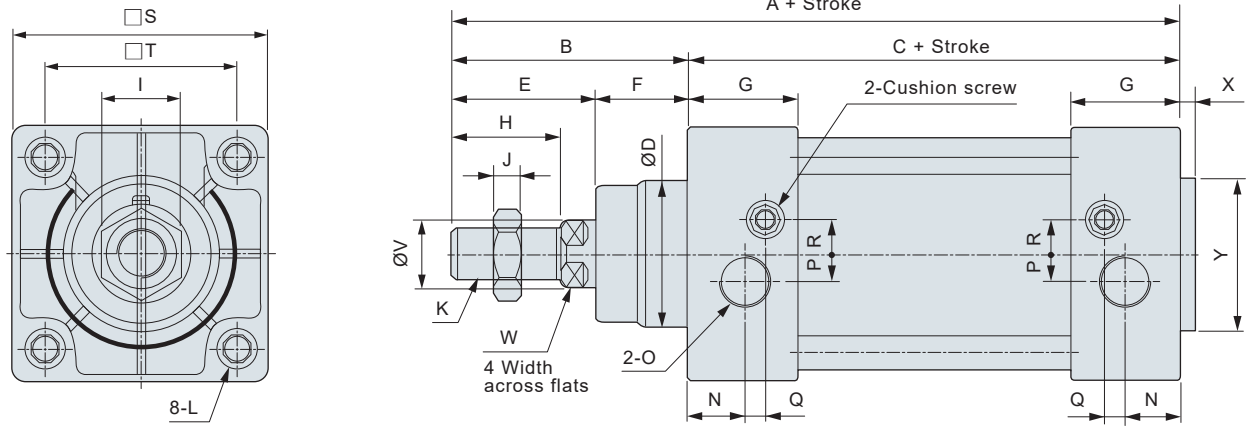
PCB3

DAI ISO 15552 Standard cylinder

External dimensions

CHELIC PNEUMATIC

DAI Ø32 ~ Ø200 (Standard type)



※ The dimensions of magnetic type cylinder are the same as non-magnetic type cylinder.

Dimension

Unit: mm

Bore size	Mark	A	B	C	D	E	F	G	H	I	J	K	L	N
32		142	48	94	30	29	19	27.5	22	17	6	M10 x 1.25	M6	13
40		159	54	105	35	33	21	32	24	17	7	M12 x 1.25	M6	17
50		175	69	106	40	42	27	31	32	23	8	M16 x 1.5	M8	15.5
63		190	69	121	45	42	27	33	32	23	8	M16 x 1.5	M8	16.5
80		214	86	128	45	53	33	33	40	26	10	M20 x 1.5	M10	16.5
100		229	91	138	55	55	36	37	40	26	10	M20 x 1.5	M10	18.5
125		279	119	160	60	79	40	45	54	41	13.5	M27 x 2	M12	23
160		332	152	180	65	94	55	50	72	55	18	M36 x 2	M16	25
200		347	167	180	75	100	65	50	72	55	18	M36 x 2	M16	25

Unit: mm

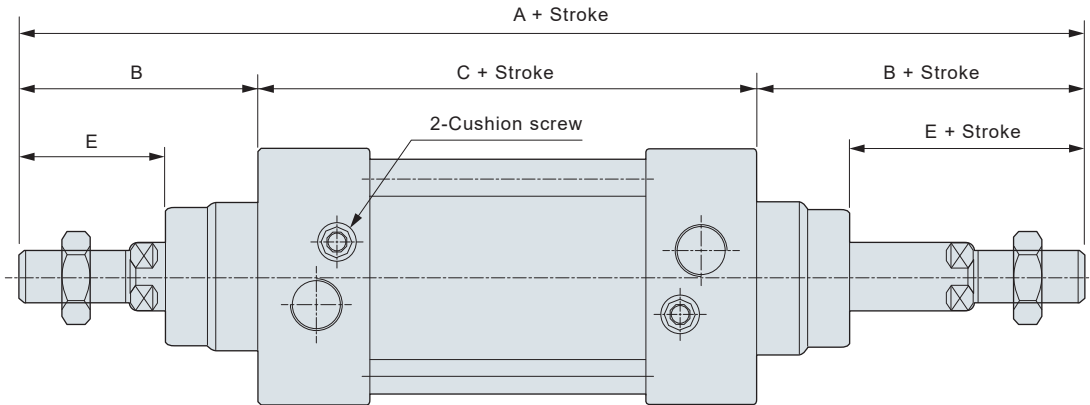
Bore size	Mark	O	P	Q	R	S	T	V	W	X	Y
32	G1/8	5.5	6	6	47	32.5	12	10	3	30	
40	G1/4	6	7.5	8.5	53	38	16	13	3.5	35	
50	G1/4	7.5	6.5	9.5	65	46.5	20	17	3.5	40	
63	G3/8	7.5	7.5	11.5	75	56.5	20	17	4	45	
80	G3/8	9	7.5	13.5	95	72	25	22	4	45	
100	G1/2	9.5	8.5	13.5	115	89	25	22	4	55	
125	G1/2	14	12	14	140	110	32	27	4	60	
160	G3/4	15	12	20	180	140	40	36	4	65	
200	G3/4	15	12	20	220	175	40	36	5	75	

DAID / DAIL ISO 1552

External dimensions

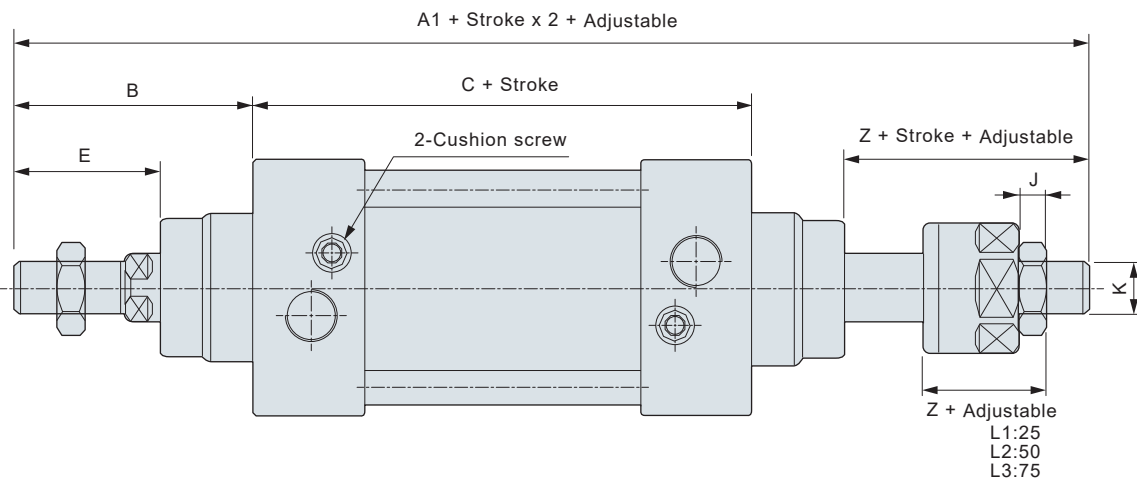
CHELIC PNEUMATIC

DAID Ø32 ~ Ø200 (Double rod type)



DAIL Ø32 ~ Ø200 (Adjustable stroke)

- ※ 1. The dimensions of magnetic type cylinder are the same as non-magnetic type cylinder.
- 2. The unmarked dimension is same as DAI standard type.



Dimension

Unit: mm

Bore size	Mark	A	A1	B	C	E	Z	J	K
32		190	188	48	94	29	27	6	M10 x 1.25
40		213	208	54	105	33	28	7	M12 x 1.25
50		244	231	69	106	42	29	8	M16 x 1.5
63		259	246	69	121	42	29	8	M16 x 1.5
80		300	282.5	86	128	53	35.5	10	M20 x 1.5
100		320	300.5	91	138	55	35.5	10	M20 x 1.5
125		398	366.5	119	160	79	42.5	13.5	M27 x 2
160		484	458	152	180	94	68	18	M36 x 2
200		514	482	167	180	100	68	18	M36 x 2

DAC

DAU

DAI

DNG

DMB2

Sensor mounting bracket

DNF

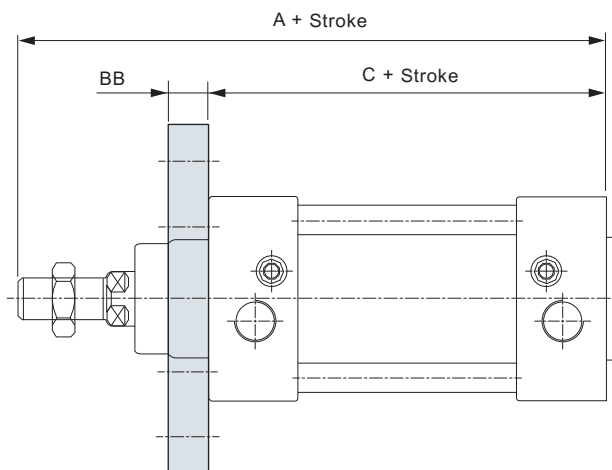
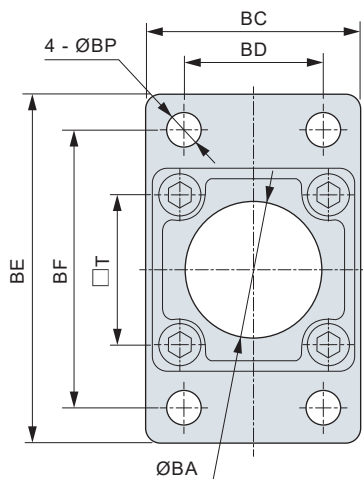
PCB3

DAI ISO 15552 Standard cylinder

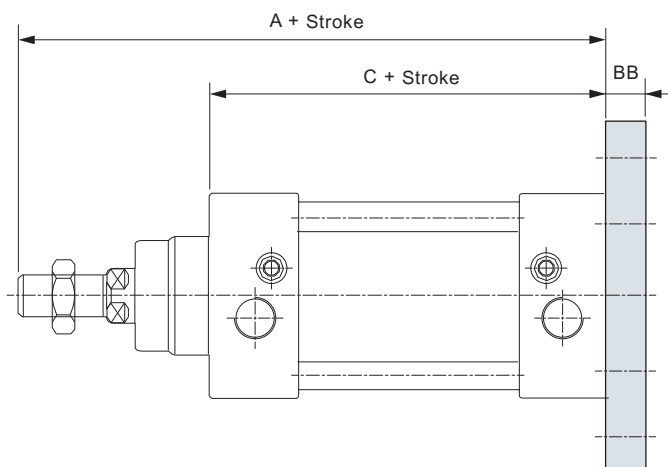
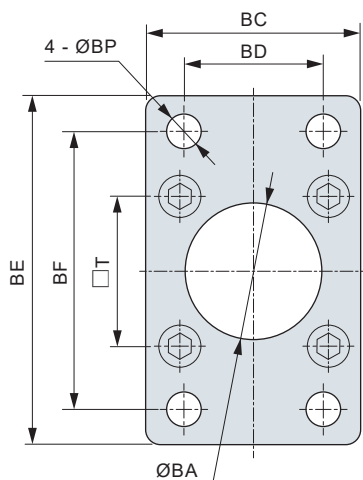
Mounting options

CHELIC PNEUMATIC

► Flange – **FA** Front flange



► Flange – **FB** End flange



► Dimension

Unit: mm

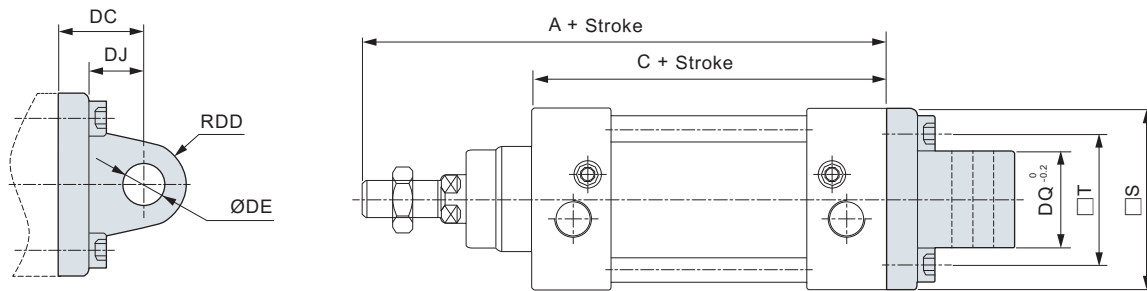
Bore size	Mark	A	C	BA	BB	BC	BD	BE	BF	BP	T
32		142	94	30	10	45	32	80	64	7	32.5
40		159	105	35	10	52	36	90	72	9	38
50		175	106	40	12	65	45	110	90	9	46.5
63		190	121	45.5	12	75	50	120	100	9	56.5
80		214	128	45	16	95	63	150	126	12	72
100		229	138	55	16	115	75	175	150	14	89
125		279	160	61	20	139	90	220	180	16	110
160		332	180	66	20	180	115	280	230	18	140
200		347	180	76	25	220	135	320	270	22	175

DAI ISO 15552 Standard cylinder

Mounting options

CHELIC PNEUMATIC

► Clevis – CA Single clevis

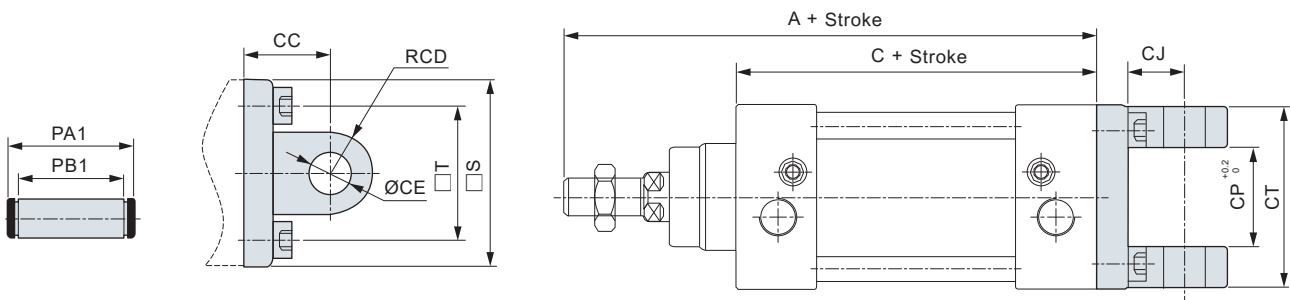


► Dimension

Unit: mm

Bore size	Mark	A	C	S	T	DC	DD	DE	DJ	DQ
32		142	94	47	32.5	22	9	10	13	25.8
40		159	105	52	38	25	10.5	12	16	27.5
50		175	106	64	46.5	27	11	12	17	31.7
63		190	121	74	56.5	32	13.5	16	22	39.7
80		214	128	94	72	36	14.5	16	22	49.7
100		229	138	113	89	41	17	20	27	59.7
125		279	160	139	110	50	22	25	33	69.7
160		332	180	180	140	55	25	30	35	90
200		347	180	220	175	60	25	30	35	90

► Clevis – CB Double clevis



► Dimension

Unit: mm

Bore size	Mark	A	C	CC	CD	CE	CJ	CP	CT	PA1	PB1	S	T
32		142	94	22	9	10	13	26	45	51	45.5	47	32.5
40		159	105	25	10.5	12	16	25	52	59	52.5	52	38
50		175	106	27	11	12	17	32	60	67	60.5	64	46.5
63		190	121	32	13	16	22	40	70	77	70.5	74	56.5
80		214	128	36	14	16	22	50	90	97	90.5	94	72
100		229	138	41	17.5	20	27	60	110	119	10.5	113	89
125		279	160	50	21.5	25	31	70	130	139	130.5	139	110
160		332	180	55	30	30	35	90	170	186	172	180	140
200		347	180	60	30	30	35	90	170	186	172	220	175

DAC

DAU

DAI

DNG

DMB2

Sensor mounting bracket

DNF

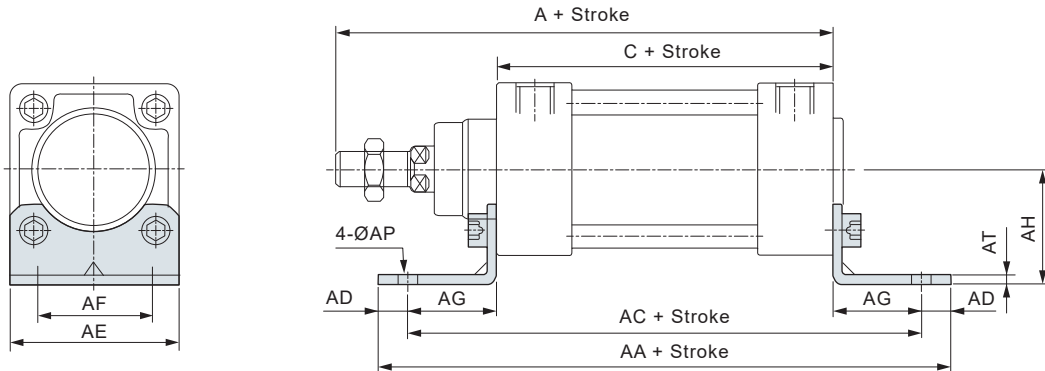
PCB3

DAI ISO 15552 Standard cylinder

Mounting options

CHELIC PNEUMATIC

▶ Axial foot – **LB**

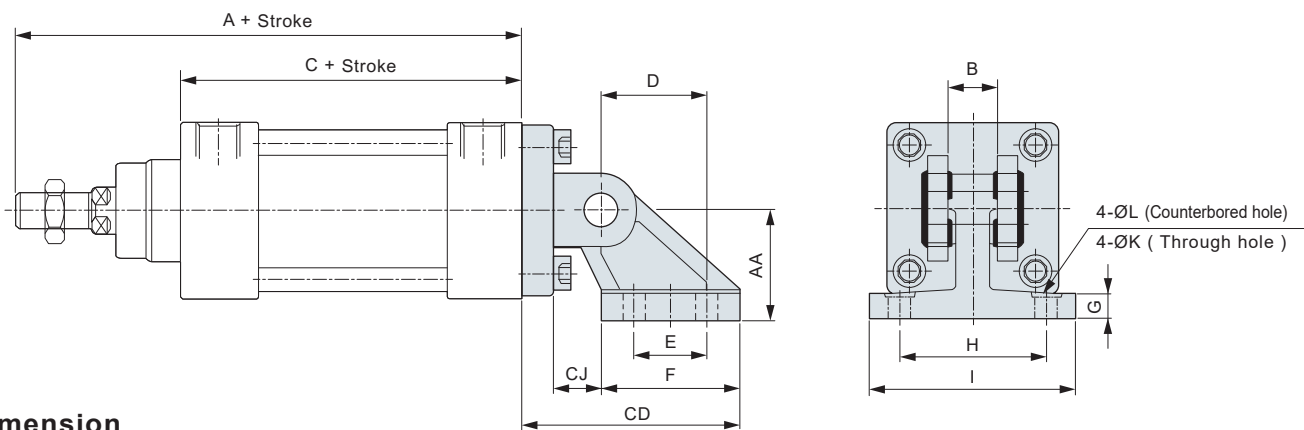


▶ Dimension

Unit: mm

Bore size	Mark	A	C	AA	AC	AD	AE	AF	AG	AH	AP	AT
32		142	94	158	142	8	47	32	24	32	7	3
40		159	105	179	161	9	53	36	28	36	9	3
50		175	106	190	170	10	65	45	32	45	9	3
63		190	121	209	185	12	75	50	32	50	9	3
80		214	128	248	210	19	95	63	41	63	12.5	4
100		229	138	266	228	19	115	75	45	71	14.5	4
125		279	160	290	250	20	140	90	45	90	16.5	8
160		332	180	340	300	20	180	115	60	115	18	8
200		347	180	380	320	30	220	135	70	135	22	9

▶ LNG - Single clevis fixed plate (LNG can't be used alone, it must be used with CB)



▶ Dimension

Unit: mm

Bore size	Mark	A	AA	B	C	CD	CJ	D	E	F	G	H	I	K	L
32		142	32	26	94	50	10	21	18	31	8	38	51	6.6	–
40		159	36	28	105	56	12	24	22	35	10	41	54	6.5	–
50		175	45	32	106	68	13	33	30	45	12	50	65	9	–
63		190	50	40	121	77	17	37	35	50	14	52	67	9	–
80		214	63	50	128	93	19	47	40	60	14	66	86	11	18
100		229	71	60	138	106	22	55	50	70	17	76	96	11	18
125		279	90	70	160	135	26	70	60	90	20	94	124	14	21
160		332	115	90	180	172	25	97	88	126	25	118	156	14	21
200		347	135	90	180	185	31	105	90	130	30	122	162	18	26

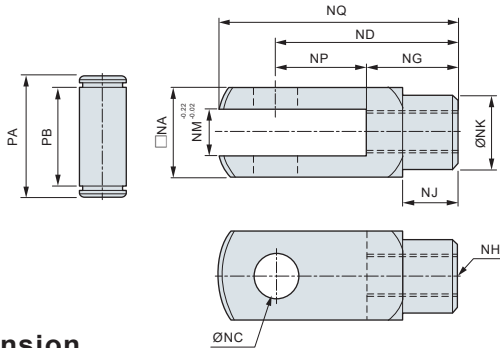
DAI ISO 15552 Standard cylinder

Rod end joint

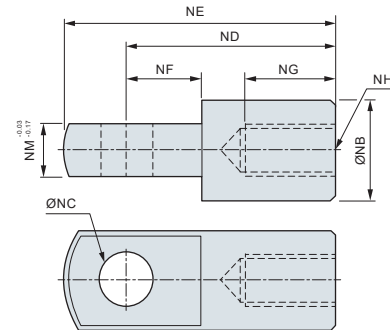
CHELIC PNEUMATIC

Joint specification

Rod clevis



I connector



Dimension

Unit: mm

Bore size	Mark	NA	NB	NC	ND	NE	NF	NG	NH	NJ	NK	NM	NP	NQ	PA	PB
32		19	20	10	40	50	15	20	M10 x 1.25	12	18	10	20	52	25	19.5
40		25.4	24	12	48	62	24	20	M12 x 1.25	20	23	12	24	62	32.8	26.5
50		32	32	16	64	82	32	23	M16 x 1.5	22	30	16	32	83	39.3	33
63		32	32	16	64	82	32	23	M16 x 1.5	22	30	16	32	83	39.3	33
80		44.4	40	20	80	102	40	30	M20 x 1.5	30	39	20	40	105	53.3	45
100		44.4	40	20	80	102	40	30	M20 x 1.5	30	39	20	40	105	53.3	45
125		55	55	30	110	155	50	55	M27 x 2.0	40	42	30	55	148	64.2	54.8
160		70	-	35	144	-	-	55	M36 x 2.0	45	60	35	73	179	80.2	70.8
200		70	-	35	144	-	-	55	M36 x 2.0	45	60	35	73	179	80.2	70.8

DAC

DAU

DAI

DNG

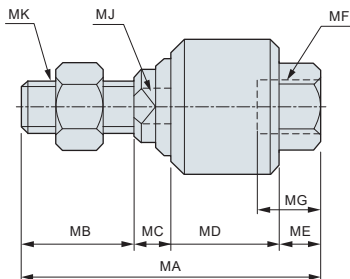
DMB2

Sensor mounting bracket

DNF

PCB3

Floating joint

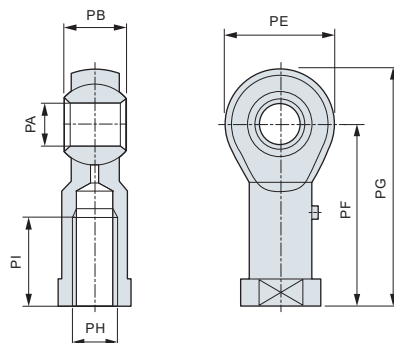


Dimension

Unit: mm

Bore size	Mark	MA	MB	MC	MD	ME	MF	MG	MJ	MK
32		58	22	7	21	6	M10 x 1.25	11	10	M10 x 1.25
40		58	22	8	21	7	M12 x 1.25	12	12	M12 x 1.25
50		90	27	10	41	12	M16 x 1.5	19	17	M16 x 1.5
63		90	27	10	41	12	M16 x 1.5	19	17	M16 x 1.5
80		102	29	13	46	14	M20 x 1.5	22	22	M20 x 1.5
100		102	29	13	46	14	M20 x 1.5	22	22	M20 x 1.5
125		-	-	-	-	-	-	-	-	-
160		-	-	-	-	-	-	-	-	-
200		-	-	-	-	-	-	-	-	-

Rod end



Dimension

Unit: mm

Bore size	Mark	PA	PB	PE	PF	PG	PH	PI
32		10	14	28	43	57	M10 x 1.25	20
40		12	16	32	50	66	M12 x 1.25	22
50		16	21	42	64	85	M16 x 1.5	28
63		16	21	42	64	85	M16 x 1.5	28
80		20	25	50	77	102	M20 x 1.5	33
100		20	25	50	77	102	M20 x 1.5	33
125		28	35	66	103	136	M27 x 2.0	51
160		42	25	80	125	165.5	M36 x 2.0	80
200		42	25	80	125	165.5	M36 x 2.0	80